



Season's Greetings

MK
LIGHTNING



POOLE

English National
Premier League

Saturday 21st December 2002



GO • MK LIGHTNING!

Two exciting new teams arrive in Milton Keynes



The Leon Cupra R

from **£16,995** on the road*

Specification includes:

- 210bhp
- Immobiliser and alarm
- ABS, EDS and TCS • 6 speed gearbox
- Electric front and rear windows
- 6 CD autochanger • Front sports seats
- Power steering • Remote central locking
- Climatronic air conditioning • 17" alloy wheels
- Driver's and front passenger's airbag & front side airbags



Milton Keynes SEAT

The Alhambra

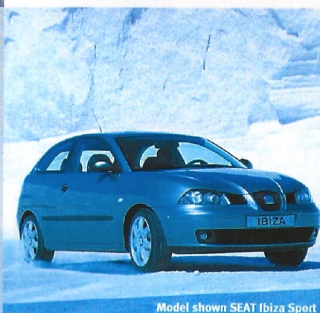
from **£15,995** on the road*

Standard specification includes:

- Power steering
- Air conditioning
- Front electric windows
- Remote central locking
- Immobiliser and alarm • ABS
- Six speed gearbox (manual versions)
- Anti dazzle rear view mirror • Seven seats
- Driver's, passenger's & front side airbags

Proud
sponsors of

Milton Keynes Lightning



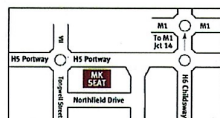
Model shown SEAT Ibiza Sport

The New Ibiza

from **£7,995** on the road*

Standard specification includes:

- Radio/single CD with 8 speakers
- Air conditioning • Driver's airbag
- Passenger's airbag with de-activation
- Remote central locking with deadlocks
- Cryptocode immobiliser • Central sunvisor
- Power steering • Reflector in front door panel
- One-touch electric front windows with anti-squeeze facility



Milton Keynes SEAT

Northfield Drive, Milton Keynes.

Tel: 01908 351199

www.seat.co.uk



Fuel consumption and CO₂ emissions measured in accordance with EU Directive 99/94. Urban: 19.1-49.6mpg / 5.7-14.8 ltr per 100km, Extra Urban: 33.2-78.5mpg / 3.3-8.5 ltr per 100km, Combined: 26.2-64.2mpg / 4.4-10.8 ltr per 100km, CO₂: 139-228g/km

*ON THE ROAD LIST CASH PRICE INCLUDE DELIVERY, NUMBER PLATES, VALUE ADDED TAX, 12 MONTHS' VEHICLE EXCISE DUTY BASED ON THE CO₂ EMISSION LEVEL AND VEHICLE FIRST REGISTRATION FEE AS APPLICABLE AT THE TIME OF SUPPLY. VAT IS CHARGED AT 17.5% ALL PRICE AND PRODUCT INFORMATION CORRECT AT TIME OF GOING TO PRESS. MODELS SHOWN SEAT IBIZA SPORT, LEON CUPRA R AND ALHAMBRA S.



Lightning Directory

Executive Committee Members:

Harry Howton (Chairman)
Vito Kausa (General Manager)
John Jamieson (Team Manager)
Nick Poole (Players Rep)
Simon Howard (Players Rep)

Associate Committee Members:

Dave Fairhurst (MK Thunder)
Pete Ledgard (MK Juniors)
Pat Corrigan (Supporters Club)
Simon Hunter (Supporters Club)

Coach:

Nick Poole

Asst. Coach: Simon Howard

Programme Contributors:

MKIHC, MKJHC, Paul Brookman

Sponsorship & PR:

Vito Kausa, Chris Piggott, Ian Cook

Match Night Announcers:

Jacqui Dennis & Ian Cook

Official Scorers:

Simon Hunter

Timekeeper: Martin Waters

Penalty Boxes: Ernie Ovenden

Michael Ovenden

Goal Judges: Roy Langley

"MK Jesters"

Match Night DJ: David Stevenson

First Aid: Pete Nolan

Photographer: Ian Summers

WebSite: www.mk-lightning.com

Box Office No: 01908 696696

Face Off Times:

Saturday 19.00hrs

Sunday 18.00hrs

Admission Prices

Adult	£6.50
Child	£3.50
Family (1Ad+2Ch)	£10
Family (2Ad+2Ch)	£16.50
Concessions	£5.00

Programme Edited By:

Lightning Strikes

Programme Production:

Kall Kwik MK

This programme is published on behalf of the MK Lightning. Opinions expressed within are not necessarily representative of the publishers. All material is copyright and may not be reproduced without the written consent of the publisher.

Tickets are issued subject to regulations governing the admission of spectators. The management reserves the right of admission. Alcohol may not be brought into the premises. Milton Keynes Lightning merchandise is only available through approved outlets within the arena. No flash photography is allowed during the game.

From The Bench....

'Seasons Greetings'

Good evening and welcome to the 'Thunderdome' for tonight's top of the table clash with the Peterborough Phantoms. It is a game the players have been looking forward to, since our first meeting in early September, when the phantoms edged us, 6-4 in Peterborough. Since then, the phantoms have only

dropped two games, and with the advantage, they have in games in hand they are in reality the league leaders. We must look to get results tonight and in the away game after Christmas if we are to catch them in the league.

The game tonight will be a great advert for British hockey as some of the finest home grown talent will be on the ice tonight for both teams. The Phantoms' Cotton brothers (Darren and Jon) ooze talent along with the very quick Lewis Buckman and hard working Shaun Yardley. Combine those four with the likes of our Clarke, Randall, Owen, and young Jamo, and you probably have the top Brits in the ENPL.

As for last weekends result on Saturday against the Isle of Wight, I could not be happier. With such a short bench (injuries, GB duty, illness, and a Thunder game) the guys played their socks off and deserved the victory. If we can combine that work rate with a full bench, I feel very confident in getting the right results.

To the fans, I would like to wish everyone a Merry Christmas and a safe holiday period. Remember to keep it loud tonight and to 'throw your bear' after our first goal.

See you in the bar after the match,

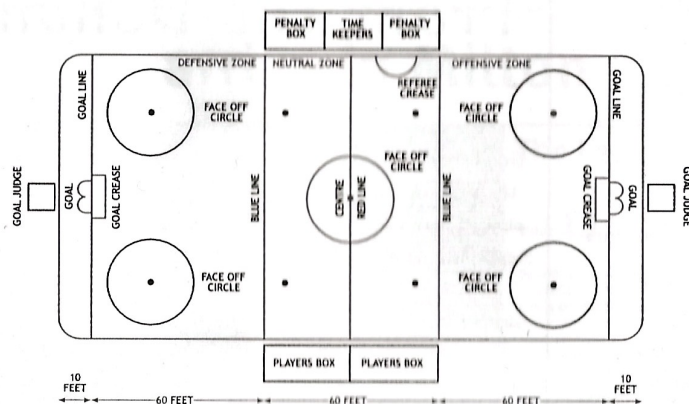
Nick

NO FLASH PHOTOGRAPHY IS ALLOWED DURING THE GAME. ANYONE PERSISTING WITH THIS, MAY BE ASKED TO LEAVE THE ARENA.

**Signing Autographs after tonight's game
Dean Campbell**

www.icehockeyleague.co.uk

THE ARENA



Game Officials

The referee controls the game. He calls all the penalties and must decide the legality of goals, though sometimes he will call time and ask his linesmen for an opinion before he makes the final decision. The duty of the linesmen is to determine offside and icing. They drop the puck for face offs. They chase the puck after stoppage of play.

Where is the Game played?

The game takes place in the 'rink' which is approximately 200 feet long by 85 feet wide and is made of water, frozen on top of concrete, producing the ice surface. The arena has rounded corners.

What are all the lines painted on the ice for?

The red line shows the centre of the ice and regulates how far the players can shoot and pass. The blue lines split the rink into zones. The zone behind your own team's blue line is your defending zone and behind the other team's blue line is your attacking zone. The bit in the middle is the neutral Zone.

And the circles?

These are the face-off circles. Two just in front of and either side of each goal and one in the middle. These are where play starts and restarts after an interruption in play. Play always starts in the middle, but where it restarts, depends on what has happened in the play.

The Players.

There are six players for each team on the ice at any one time. Those six players will keep on changing throughout the game. Who is on the ice at any one time is a complex business which is determined by each team's coach.

There are 3 types of player:

Three forwards, who line up at the front and are in charge of offensive play i.e. trying to score goals. They are known as, Left Wing, Centre and Right Wing.

Two defencemen, one on the right and one on the left who try to prevent the other team scoring.

One Goaltender or Goalie. or Netminder.

How Long Does a Game Last?

There are 3 periods of 20 minutes each but each time that play is interrupted the clock is stopped which means that each period can go on a lot longer than 20 minutes. There is a 15 minute break between each period.

entering the Thunderdome tonight

Peterborough Phantoms

Phantoms arrive at the thunderdome for the first time in the League, having visited the Thunderdome for a Halloween challenge. A new team this season, like MK, they have assembled a strong team, blending youth with experience. There is great local rivalry between these two clubs, and no doubt tonight we will see a fiercely contested game, as the Phantoms drew first blood in the league back in September winning 6-4. Currently third in the league, they have games in hand over both first and second placed teams.

Ones to Watch;

Jesse Hammill #49 - Defence - Import

Jesse has played for Peterborough Pirates, Milton Keynes Kings, Paisley Pirates, and has a wealth of experience.

Became Assistant Coach of the Peterborough Phantoms this summer.

Individual Awards: Peterborough Pirates Clubman of the Year 1997/98.

Darren Cotton #26 - Forward - British

Grew up and learnt his hockey in the UK, despite having been born in Germany.

Signed for Coventry Blaze during June 2000, but became a Peterborough Pirates player shortly afterwards, without ever playing for Coventry.

Played for the BNL team in the 2000/01 Superleague v BNL All-Star game.

International Honours: GB u-16 1992/93 (Gold medal - Riverside Bantam Tournament, Ontario & Silver medal - Chris Verwijst Tournament, Holland) & 1993/94; GB u18 1995/96 (Pool C, Slovenia).

Domestic Team Trophies: EPL Playoff Championship 1999/00 (Chelmsford Chieftains); EPL 1999/00 (Chelmsford Chieftains); English League, Southern Conference 1997/98 (Invicta Dynamos); Data Vision Millennium Cup 1999/00 (Chelmsford Chieftains)

Jon Fone #8 - Defence - British

A young locally born player, that has come up through the junior system, having played for the Peterboro' Islanders (ED1) and Nottingham Lions, between spells for the senior team. A talented youngster with International honours at junior level:

GB u16 (1997/98) silver medal - Steel City Tournament, Saulte Ste Marie, Canada, & silver medal - Chris Verwijst Tournament, Holland; GB u18 (1999/00 Slovenia)

Junior News

u14 Southern B League - Saturday 14th December

A hat-trick from Jamie Cox and goals from David Coffey, Josh Burgess, Mathew Jackson and Daniel Harris effectively saw off any threat from the Slough B team and the MK under 14s secure their place as second in the South West B league at the Christmas break.

MK began the game with some good passing but were often let down by poor positional play and a low work rate, and the first period ended two-one to the home team with two goals from Cox, one of which came during a penalty kill. Some re-grouping in the interval saw a more disciplined effort from MK who outshot the visitors by 14 to 4 in the second period and ended the session two goals ahead, this time with conversions from Coffey and Harris. The third period saw MK spend most of the period camped in front of the Slough net, but despite constant pressure, only goals from Matthew Jackson and a final goal from Jamie Cox separated the sides.

MK did well to manage to avoid being drawn in to some rough play by the Slough team who were clearly outplayed in all areas of the game. Some sound defending from Man-of-the-Match Tom Holland and a strong penalty killing unit contributed to a workman like performance.

Scorers: Jamie Cox (3+1), Daniel Harris (1+2), Matthew Jackson (1+1),
Josh Burgess & David Coffey (1+0), Tom Castle (0+2), Mark Anders (0+1)

u16 Southern A League - Sunday 15th December

Milton Keynes (4) vs. (0) Cardiff

Sunday saw a far more confident MK side take to the ice against their visitors, Cardiff.

MK know that this was really a make or break point at this stage of the season. The addition of our new defenceman, Robin Pearzon, has certainly come at the right time. With a more solid defence, MK had the confidence to go forward more and this resulted in a far more positive performance from the team as a whole., and the first period ended 0-0.

During the second period, MK certainly stepped up a gear and were rewarded with two goals within three minutes. Thomas Hurley having slotted home with an assist from Caleb Szakacs. Followed by a fine unassisted goal from Tomas Ledgard.

MK continued to push forward in the third period with Iain McGill scoring from Michael Rausa's pass and Ian Dennis putting the puck over the line from a run on goal by Tomas Ledgard.

Overall, a good team performance, and a shut out for MK's Man of the Match, Andy Moore.

Scorers: Tomas Ledgard 1+1, Thomas Hurley 1+0, Iain McGill 1+0, Ian Dennis 1+0,
Caleb Szakacs & Michael Rausa 0+1

Man of the Match - Andy Moore Spirit of the Game - Iain McGill

u10s South West Conference - Saturday 14th December

Peterborough Beavers (19) vs. (2) Milton Keynes Storm

MK took a very early lead, through a breakaway goal from Brad Hammond, which silenced the home bench and crowd. This only lasted a few minutes, before Peterborough got their first goal, also on the breakaway to level the game. From then on, the home side put the pressure on the young visitors and raced away to a first period lead by nine goals, leaving the score at 10-1 to the Beavers. A stiff team talk at the break, saw MK return to the ice, aiming to battle for their pride. Against great odds MK scored their second goal through Cameron Green to the delight of the visitors supporters. This was to be the end of MK's fight back, as the home team continued their relentless strike rate and took the score to 19-2 at the final buzzer.

u16/19B Challenge Game - Sunday 8th December

Milton Keynes (12) vs (0) Coventry

This was a challenge game for the respective u16/19B teams from Coventry and Milton Keynes. Although the result was never in question, both teams showed a willingness to play a physical style of hockey. Milton Keynes greater experience and better skating proved to be the deciding factor.

It was only nine seconds into the game when Rob Mossford burst through to score the opening goal, assisted by Chris Russell and Oliver Nabbs. Further goals by Kyle Fifield (unassisted) and Matthew Spring (assisted by Edward Darwin and netminder Andrew Moore) stamped Milton Keynes' authority on the game with only three minutes gone. Goals continued at regular intervals through the remainder of the period by Jonathan Munn, Oliver Nabbs (2) and Caleb Szakacs with Coventry managing only two shots on Andrew Moore. The second period followed a similar pattern, with Milton Keynes scoring four more times, but putting more effort into restricting the opposition to a handful of chances. Caleb Szakacs(2), David Coffey and Chris Russell were the scorers in this period. Despite a further solo goal by Caleb Szakacs, the third period did not flow like the previous two, as Milton Keynes conceded several penalties. This presented a different challenge to the players as they worked hard to preserve the shutout and when the defence was breached, Andrew Moore was in fine form to deny the visitors.

It was a very useful exercise for the team and the players will have learnt a lot.
Man of the Match: William Smith

Tomorrow:

MK Falcons v Peterborough Penguins @ 12.45
MK Thunder v Basingstoke Buffalo @ 18.30

League Tables & Round Up

ENGLISH NATIONAL PREMIER LEAGUE

sponsored by www.icehockeyleague.co.uk

Team	GP	W	L	D	GF	GA	PTS	PIM
Milton Keynes Lightning	25	20	4	4	105	79	44	457
Slough Jets	30	18	6	6	140	101	42	772
Peterborough Phantoms	22	20	2	0	167	81	40	433
Swindon Lynx	27	16	8	3	165	109	35	510
Invicta Dynamos	26	14	9	3	102	100	31	342
Chelmsford Chieftains	26	12	8	6	150	115	30	588
Isle of Wight Raiders	27	13	11	3	143	111	29	391
Romford Raiders	30	11	14	5	140	158	27	629
Telford Wild Foxes	23	5	17	1	79	172	11	548
Haringey Racers	21	3	18	0	57	160	6	494
Nottingham Lions	24	2	21	1	51	139	5	284
England U20	16	0	16	0	17	71	0	147

League roundup

Saturday's results went according to form with Milton Keynes, Slough, Peterborough and Swindon all beating their opponents in league competition.

Saturdays results;

Lynx	11 - 3	England u20s
Jets	5 - 1	Lions
Lightning	3 - 2	IOW(Raiders)
Wild Foxes	2 - 11	Phantoms

Sundays results;

There was revenge for Peterborough on Sunday night as they shut-out Chelmsford, one of only two teams to defeat them so far this season. The win saw the Phantoms move to within four points of the league leaders with six games in hand.

IOW(Raiders)	6 - 3	Jets
Dynamos	5 - 5	Raiders(Rom)
Wild Foxes	5 - 8	Lynx
Phantoms	5 - 0	Chieftains

Leading Scorer

TEAM	GP	G	A	PTS	PIM
GARY CLARKE (MIL)	25	55	30	85	42
NICK POOLE (MIL)	25	23	56	79	8
KYLE AMYOTTE (CHE)	21	39	31	70	18
MERY PRIEST (SWI)	21	36	34	70	18
DAVID KOZIER (IOW)	19	33	25	58	54
BRAD KENNY (IOW)	19	33	25	58	54
ROB DOUGLAS (ROM)	23	21	30	51	16
DANNY MARSHALL (ROM)	21	15	34	49	4
ANDREW POWER (CHE)	14	18	30	48	12
GREG OWEN (MIL)	23	31	16	47	52

Netminders

TEAM	GP	MIN	SOG	GA	SAV%	GAAV
ALLEN SUTTON (MIL)	10	600	230	18	92.17	1.80
BARRY HOLLYHEAD (MIL)	15	900	507	53	89.55	3.53
MATT VAN DER VELDEN (INV)	18	1060	668	74	88.92	4.19
CHRIS DOUGLAS (CHE)	21	1180	770	91	88.18	4.63
DANIEL HEBLOP (TEL)	14	785	691	85	87.70	6.50
SIMON SMITH (SLO/ROM)	22	1253	715	89	87.55	4.26
ANDY MOFFAT (IOW)	17	989	657	80	87.82	4.85
DAVID WHITWELL (PET)	13	764	420	54	87.14	4.24
MATHIEU DAVIDGE (ROM)	17	927	590	80	86.44	5.18
GREG ROCKMAN (SWI)	6	360	174	24	86.21	4.00

www.icehockeyleague.co.uk



La Jhind[®]

RESTAURANT

Tastefully Indian

AT STATION SQUARE, CMK

www.la-hind.com

We offer Traditional Indian Cooking.
Extensive Balti and vegetarian dishes are available.
Seating for up to 120 people. We cater for large parties.
Ample parking space. Non smoking area available.



Most takeaways are packed in a made-to-measure box, so no more messy takeaway food!

Sunday Family Buffet 12 noon-5.00pm
Eat as much as you like - Adults £8.50 Children: under 12: £4.90 under 5: Free

Elder House, 502 Elder Gate, Station Square,
Central Milton Keynes, MK9 1LR

Tel: 01908 675948/667331

Fax: 01908 675429

Email: lahind@amservice.com

OPEN 7 DAYS A WEEK

Monday - Saturday

Lunch 12.00 noon to 2.30pm Evening 5.30pm to 11.30pm

Friday Lunch Closed Evening 5.30pm to 11.30pm

Sunday All day from 12.00 noon to 11.00pm

INDIAN CUISINE

No added food colourings

HALAL



Every time you Dine in at La Jhind just mention MK Lightning and

receive a FREE round of drinks

www.icehockeyleague.co.uk



Show you care, throw a bear.

As soon as Lightning score their first goal (and only then) fans can throw their Teddies onto the ice. These will then be collected up by the players, to be distributed to children spending Christmas in hospital.

The toy should be new, it can be as big or small as you like, all are welcome,

but they must be safe to give to children and must be soft toys. Hence we are suggesting you throw a teddy bear, but you could just as easily hurl a hippo!



Shirt Off His Back
14th December
John Harden
Congratulations



Man of the Match
14th December
Barry Hollyhead
Well Done !!

Lightning Stats

	GP	G	A	Pts	PIMs
Paul Gore	5	0	0	0	2
Michael Knights	21	0	11	11	75
Leigh Jamieson	25	2	12	14	26
Phil Wooderson	28	4	7	11	8
Chris McEwen	5	1	1	2	2
Rich Munnelly	8	0	3	3	0
Greg Owen	25	34	15	49	22
Mark Krater	25	6	10	16	14
Gary Clarke	28	60	32	92	44
Mark Conway	11	3	6	9	4
Dean Campbell	26	10	18	28	26
Kieron Goody	15	2	0	2	4
Geoff O'Hara	26	2	6	8	44
Dwayne Newman	28	3	26	29	75
Mikko Skinnari	28	2	29	31	32
Greg Randall	21	14	22	36	10
Simon Howard	21	6	6	12	54
Nick Poole	28	24	64	88	18
Paul Jamieson	4	0	0	0	0
Ross Bowers	1	0	0	0	0
Allen Sutton	27	0	0	0	2
Barry Hollyhead	26	0	2	2	24

EXCLUDES Challenge Games

	GP	Mins	Shots	GA	Save %	GAAv
Netminders						
Barry Hollyhead	26	1152	588	61	89.63	2.12
Allen Sutton	27	600	230	18	92.17	1.8

Match report..... Match report.....

Lightning vs. IOW Raiders – Saturday 14th December

Clarke 2+1, Poole O+3, Wooderson 1+0, Newman O+1

Nets: Hollyhead 27/2 (92.59%)

Lightning did enough to edge out Isle of Wight Raiders despite a below par performance at the Thunderdome on Saturday. With Greg Owen on Great Britain duty, Greg Randall failing to recover in time from injury and Dean Campbell ruled out through 'flu, the hosts started the game with a short bench. And four or five of those that were playing, were suffering the effects of 'flu, so the less than perfect display was perhaps understandable. The match was only five minutes old when the first major penalty was handed out by referee Glenn Meier, as Dwayne Newman was given a 10 unsportsmanlike conduct term after an altercation with Raiders' David Kozier. It was one of a number of strange decisions by Meier who threw both Michael Knights and Raiders Ritchie Hargreaves out of the game for roughing in the 13th minute. The incident, it has to be said, looked nothing more than two players embracing in a bear hug with virtually no punches thrown! At the same time Simon Howard received 2+10 for checking from behind, with Kozier going for two minutes in the bin at the same time. That left Lightning with just two defencemen available and to their credit they blocked Raiders' attempts to break through. Raiders were however one goal up by that stage with Ritchie Hargreaves setting up Kozier to score just before the fracas which led to Knights and Hargreaves' expulsions. Lightning got back on terms with a superb Gary Clarke goal three minutes after the first break. Nick Poole was the provider with a pass in from the right, which Clarke smashed, first time, into the back of the net. Just over two minutes later Clarke fed the puck forward to Phil Wooderson to tip into the net from close range, giving Lightning a lead which they destined not to lose. Clarke went close to scoring at the halfway mark, while a minute later, Lightning man of the match, netminder Barry Hollyhead, somehow thwarted Kozier. Goal number three for Lightning came just over two minutes into the third session. Newman drove a powerblast from the blue line which Raiders netminder Toby Cooley parried, only for Clarke to swoop like a hawk on its prey to fire in at the right hand side of goal. From then on solid defensive work kept Raiders at bay until the 56th minute when Brad Kenny created the opening for Jason Coles to put in a shot which Hollyhead just failed to hold and the puck crept over the line. With a minute to go Raiders – despite having Kozier in the sin bin – withdrew Cooley for an extra skater. It was a move which almost proved costly when Clarke fired on an empty net, but strangely for him missed the target.

Tired of waiting in a queue to be able to watch
your MK Lightning each week.....??

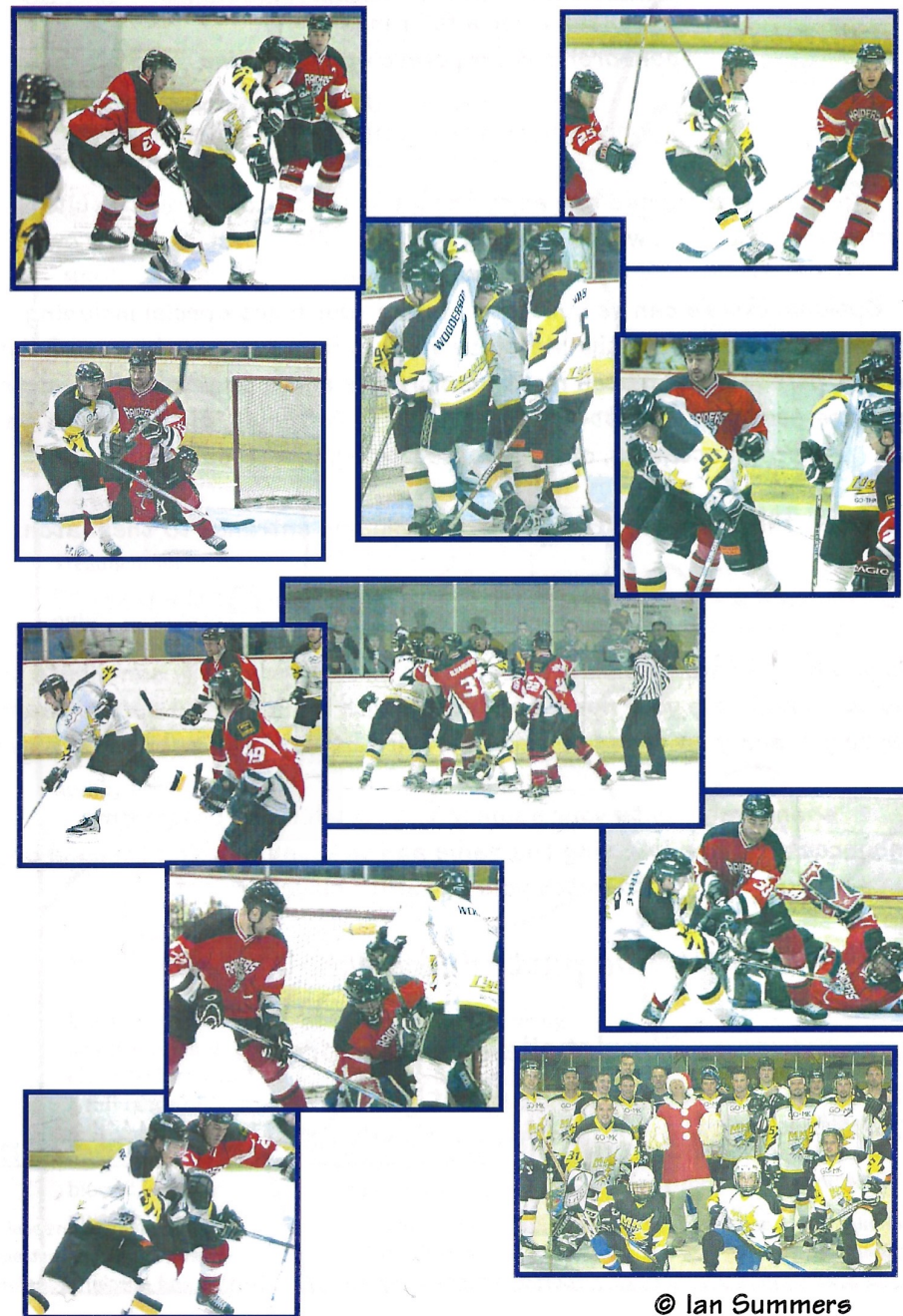
Why not buy your tickets in advance...!!
Cash, Cheque and also Credit Card facilities available

Call the Booking Office to ensure you don't have to
wait for your seat to watch the best
entertainment each weekend.

Call 01908 696696

Doors Open On Match Night at 6pm

www.icehockeyleague.co.uk



© Ian Summers

www.icehockeyleague.co.uk

MK Lightning

can offer a full range of
Sponsorship & Corporate opportunities



Match Night sponsorship – the special way to enjoy the game

You and your friends can enjoy the game in your own private suite overlooking the arena, whilst enjoying a hot or cold buffet and your own bar and waitress service.

Optional extra's can be built into making your night special including presenting the Man of the Match award, having a pre-match tour of the facility, personalised match night memorabilia and a post match meet the players session. A great way to have fun with friends, or to celebrate a special occasion, or as a corporate night with colleagues.

Prices start from only £15 per head, including entrance to the match.

Team & Player Sponsorship – you can be part of the team

Do you have a favourite player? Would you like to personally contribute to the team and have your name associated with a successful sports team? Maybe you and your friends have a fan club that want to sponsor a player.

Personal player

sponsorship gets your name in the match night programme, announcements made during the game and tickets (certain packages only) to watch your favourite player.

Want to be part of the winning team?

For details of sponsorship

Call our hotline now

01908 694239 or email marketing@mk-lightning.com

Match night sponsorship

Programme advertising

Schools & community programmes

Personal player sponsorship

Rink side advertising

Corporate match nights

Equipment sponsorship

Arena banner advertising

Parties and special occasions

www.icehockeyleague.co.uk

PHYSIO

Using ultrasound, electrotherapy & muscle energy techniques to treat sports injuries & help towards a speedy recovery.

OSTEOPATHY

Used to help alleviate joint pain, (specifically back pain). Uses a variety of techniques to manipulate joints back to a normal position.

CRANIO-SACRAL THERAPY

For the treatment of migraine, sinusitis, asthma, digestive problems, tension and anxiety. A very relaxing and gentle treatment.

CHIROPODY

Treatment for common foot disorders like: corns, verrucas, bunions, athletes foot & nail conditions. Don't wait to reap the benefits of healthy feet!

RE-HAB GYM

All the latest C.V. And weight bearing equipment that is heart rate monitor compatible. Used for a quick recovery from injury.

MASSAGE

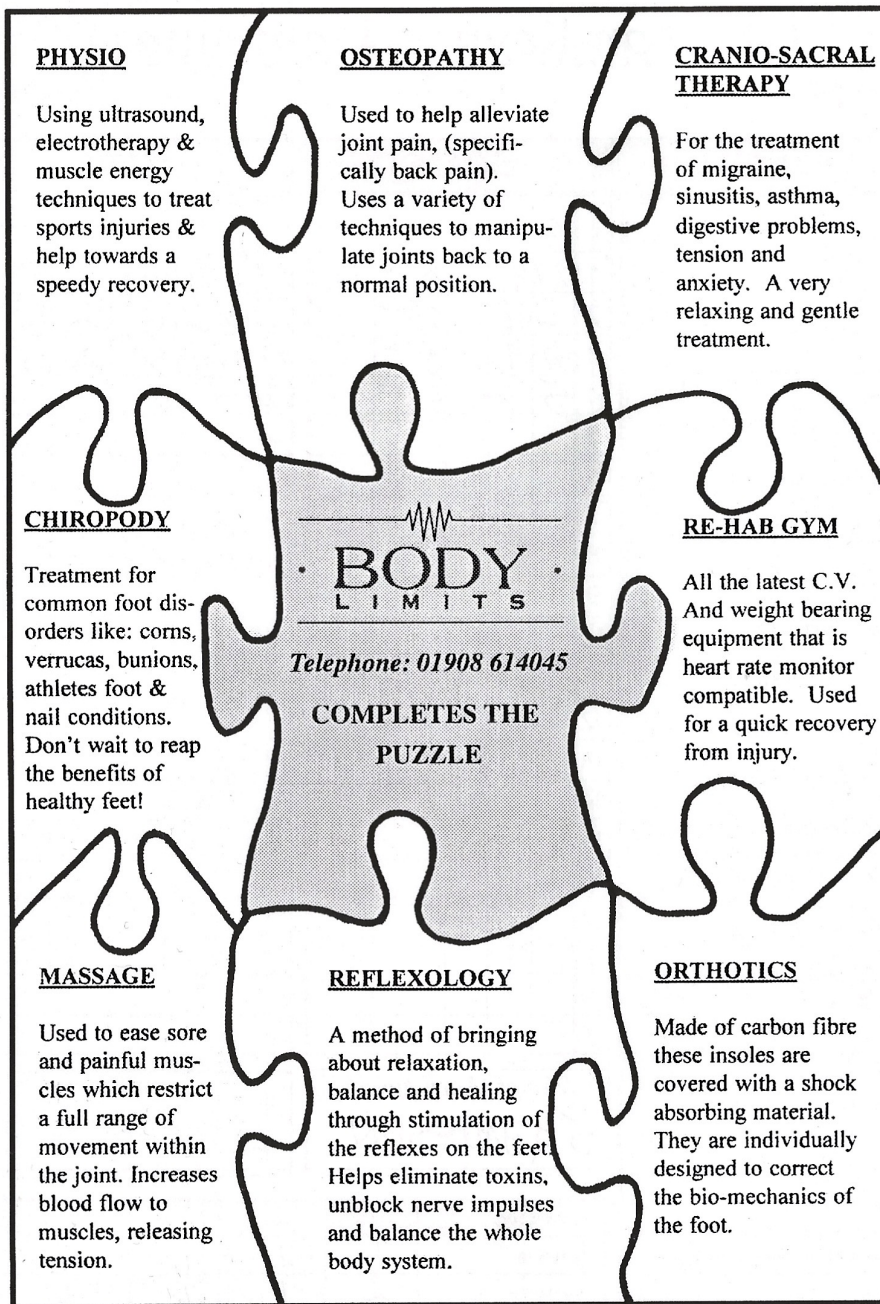
Used to ease sore and painful muscles which restrict a full range of movement within the joint. Increases blood flow to muscles, releasing tension.

REFLEXOLOGY

A method of bringing about relaxation, balance and healing through stimulation of the reflexes on the feet. Helps eliminate toxins, unblock nerve impulses and balance the whole body system.

ORTHOTICS

Made of carbon fibre these insoles are covered with a shock absorbing material. They are individually designed to correct the bio-mechanics of the foot.



www.icehockeyleague.co.uk



Milton Keynes Lightning



PLAYERS	GOALS						PENALTIES			
1. Allen Sutton ✓		G	A	A	Time	PP/SH	No	Offence	Dur	Time
4. Michael Knights (A) ✓	1	2	7	9	18 ⁴⁰	PP	17	Roughing	2	5 ²⁰
5. Leigh Jamieson ✓	2	1	4	9	23 ³⁴		14	Holding	2	21 ²⁴
7. Phil Wooderson ✓	3	5	0	9	35 ²⁵		22	Tripping	2	56 ²²
8. Chris McEwen ✓	4	5			55 ⁵⁷					
9. Greg Owen ✓	5									
11. Mark Krater ✓	6									
14. Gary Clarke ✓	7									
Sponsored by: Barfordian	8									
16. Mark Conway ✓	9									
17. Dean Campbell (A) ✓	10									
18. Kieron Goody	11									
20. Geoff O'Hara ✓	12									
22. Dwayne Newman (C)	13									
Sponsored by: MK Seat	14									
27. Mikko Skinnari ✓	15									
Sponsored by: Barfordian	16									
31. Barry Hollyhead ✓	17									
50. Greg Randall (A) ✓	18									
55. Simon Howard ✓	19									
Sponsored by: MK Seat	20									
91. Nick Poole ✓										
Sponsored by: MK Seat										
Coach: Nick Poole										
Asst. Coach: Simon Howard										
Team Manager: John Jamieson										
Team Medic: Pete Nolan										
Man of Match Award:							Tonight's Referee			
5 JAMIESON							LITCHFIELD			
Period Score							1st	2nd	3rd	Final
Lightning							1	2	1	4
Phantoms							2	1	1	4



Peterborough Phantoms



PLAYERS	GOALS						PENALTIES			
1. James Moore n/m ✓		G	A	A	Time	PP/SH	No	Offence	Dur	Time
4. David Michelli	1	39	27		10 ⁴¹		10	Slashing	2	2 ¹⁶
5. Jake Armstrong ✓	2	7			14 ⁴⁷		49	XCheck	2	25 ²⁰
7. Doug McEwen ✓	3	27	49		39 ²⁸		39	Lb/usc	2	218 ²⁴
8. Jon Fone ✓	4	7			42 ²⁵		27	XCheck	2	50 ⁰⁹
10. Lewis Buckman ✓	5									
12. Jon Cotton ✓	6									
16. Russell Coleman	7									
17. Shaun Yardley ✓	8									
19. Jason Buckman ✓	9									
21. Bernie Bradford ✓	10									
22. Grant Hendry	11									
24. Terry South ✓	12									
26. Darren Cotton ✓	13									
27. Duncan Cook ✓	14									
39. Craig Britton ✓	15									
40. David Whitwell n/m ✓	16									
41. James Ellwood	17									
49. Jesse Hammill ✓	18									
51. Jason Porter	19									
98. Luc Chabot ✓	20									
Coach: Luc Chabot										
Asst.Coach: Jesse Hammill										
Bench Coach: Ben Llewelyn										
Equipment: Rob Horspool										
Man of Match Award:							TONIGHT'S LINESMEN			
39 BRITTON										
Mascots:										
Jack Bebbington										
Scott McKain										
Shots on Goal							1st			
Lightning							15			
Phantoms							8			
2nd							9			
3rd							16			
Final							40			
							33			

Match Report..... Match Report.....

Lightning vs. Swindon Panthers - Sunday 15th December

Conway 2+1, Clarke 2+0, O'Hara & Goody 1+1, Newman & Krater 0+2,
Howard, Skinnari & Wooderson 1+0, McEwen & Poole 0+1
Nets: Sutton 27/2 (92.59%)

Panthers, one of the best recreational teams in the country, proved little match for in form Lightning on Sunday. The Swindon side agreed to play at short notice following the postponement of Lightning's scheduled game against Great Britain Under 20s. And they were certainly given a testing time. Player coach Nick Poole used the game to give ice time to Milton Keynes Thunder regulars including Jim Ryan and Bobby Jinks as well as giving younger members of his squad, with more shifts than they would normally expect to get. But despite that, Lightning were rarely in trouble once Gary Clarke sent them on their way in the 11th minute. Three minutes later both Clarke and Michael Knights were sent to the sin bin – the former on a rare checking from behind penalty – together with Panthers' Andy Morton-Holmes. Jinks received the unconventional penalty of four plus ten for attempted butt ending in the 15th minute, but still Panthers could not find a way through. In fact it was Lightning who scored the next goal when Chris McEwen set up Geoff O'Hara to net shorthanded just over a minute before the first break. The start of the second period saw two goals in less than a minute, when defencemen Simon Howard and Dwayne Newman combined to beat Swindon netminder Andy Webster – Howard notching the goal in the 23rd minute. Twenty five seconds later Mark Krater was the provider when teenager Mark Conway fired in to make it 4-0. Goal number five also went to another youngster, Keiron Goody, registering from Conway's pass in the 29th minute. Panthers finally got on the scoresheet in the 35th minute as their man of the match Miroslav Rakovan found a way past Allen Sutton. The five goal margin between the sides was restored three seconds from the end of the period with O'Hara the supplier of the pass which saw Mikko Skinnari shot home. Conway got his second goal of the night – again from a Krater pass in the 46th minute, before Rimko netted for the visitors. Panthers were unable to capitalise when Leigh Jamieson was called for a stick holding offence with less than six minutes to go. Instead Poole provided the pass for Phil Wooderson to score short handed. Lightning's last goal was also short handed – this time the player who got the side's first goal, Clarke, scoring unassisted at 57mins 8secs to make it 9-2.

HOCKEY IS A FAMILY SPORT !

PLEASE SHOW CONSIDERATION TO YOUR FELLOW HOCKEY SUPPORTERS
BY REMAINING SEATED AT ALL TIMES WHILST PLAY IS IN PROGRESS.
THANK YOU

www.icehockeyleague.co.uk

Kall Kwik Milton Keynes
proud to be supporting
MK Lightning's Inaugural season



Make Some Noise
For Your....MK LIGHTNING !!

Kall Kwik

PRINT COPY DESIGN

Tel: 01908 605456

Fax: 01908 674366

www.icehockeyleague.co.uk



Fantastic Holidays In Europe & Beyond

New Years Party	Dec 30th - Jan 2nd
Valentines Weekend	Feb 14th - 16th
Super City Break	Feb 28th - Mar 2nd
Chocolates & Lace Bruges	Apr 4th - 7th
Scotland All Inclusive	Apr 7th - 11th
Malta	Apr 10th - 17th

Just a small selection of Holidays available.

Contact Barfordian for more details

Barfordian Coaches

Supporting and Transporting

Milton Keynes Lightning

Call today for a FREE Brochure

01234 355440

www.icehockeyleague.co.uk



Milton Keynes Ice Hockey Supporters Club News

A very warm welcome is extended to the Peterborough Phantoms and all the travelling fans. Enjoy the match and we wish you a safe journey home afterwards and a Happy Christmas. Children under the age of 16 are not allowed to remain in the Licensed bar after 9.30pm. The family room is available after that time, access is through the door leading into A block. All children under the age of 12 must be supervised by an adult in the family room please.

Supporters Club Committee for this year are: Pat Corrigan, Debbie Marshall, Allyson Jones, Melanie Chandler, Roy Warlow and Simon Hunter. Any time you wish to contact us you may do so at the Supporters Club stand, we are always available to you.

SHIRT OFF HIS BACK. Tickets are available from our seller going around the rink, and at the Club stand. The draw will be made after the second interval by a young fan and presented by the player at the conclusion of the match. The whole of the income from this draw goes directly to the team so everyone's contribution is very important. Last weeks winner was John Harden.

50 / 50 DRAW. The sellers will be at the top of the concourse, and in the reception area before the game starts. They will be around the rink and also at the Club stand during the match. A young fan will be asked to make the draw at the beginning of the third period and the winner should come to the stand to collect their prize. 50% of the take goes in prize money and 50% goes to the club and used towards our sponsorship of Mikko Skinnari's wages. Thank you all for your continued support. Last weeks winner was Heather Durrent.

SPONSORS SIGNED PHOTOGRAPHS are now at the club stand for those of you who have sponsored a player. Please come and collect them this week.

SUPPORTERS CLUB MEMBERSHIP. If you have not already done so, collect your membership card and personalised LIGHTNING key ring from the club stand tonight. There are many benefits to joining, priority entry to all social events, special rates to travel on the coach, discounts on some of the merchandise, 5% discount on your LIGHTNING shirt, and special social events with the players and management.

The decision was taken at the last full committee meeting to make the Milton Keynes General Hospital S.C.B.U. (Special Care Baby Unit) our nominated charity this year. We shall be having special fund raising events for them during the season. As many of you will be aware, it often has to send very ill babies to other hospitals due to a shortage of funds and we want to give our help from the Supporters and team, so please keep your eyes on this space for the details. We will also have information of the Club stand on match nights. Our thanks go to Neil, a long time Milton Keynes supporter, who has donated his collection of lapel pins to be sold in aid of the SCBU. We are selling them at just £2.00 each on the club stand and the whole of the money collected will start off our appeal.

Social Scene

Come to the stand tonight to collect your entry form for Dr. Phil Chandlers Quiz night. It is being held at 7.00pm on Sunday 22nd December in the Grafton Suite and we shall have the Lightning coming along to "HELP" us answer his questions. There will be a raffle in aid of the MK Special care Baby Unit and prizes for the winning table. Please come along and show your support for our Special Charity and meet Phil and Maureen again.

TICKETS FOR THE ADULT CHRISTMAS PARTY ON 30th DECEMBER ARE NOW ON SALE AT THE CLUB STAND PRICED AT JUST £5.00 FOR MEMBERS AND £10.00 FOR NON MEMBERS

THERE WILL BE A BUFFET, MUSIC, AN AUCTION AND A RAFFLE WITH A TV/DVD COMBI AS THE FIRST PRIZE. THE LIGHTNING PLAYERS AND MANAGEMENT WILL BE JOINING US AND THE DOORS OPEN AT 8.00PM - MUSIC UNTIL 2.00AM (IF ANYONE IS STILL FIT ENOUGH)

www.icehockeyleague.co.uk

BUS BUSINESS. The coach for the weekend away at the Isle of Wight leaved from the Zamboni entrance in the car park at Planet Ice at 8.00am Saturday 4th January. So that we can get away on time please be there by 7.45. We will be catching the ferry from Portsmouth to Ryde and book into the Hotel when we arrive. We meet at the rink 30 minutes before face off so there will be about 5 hours for Browsing around the Island, eating etc. before we go to the match. We depart the hotel around 11.00am on Sunday to arrive back in MK by 4.00pm approx. We can arrange for match night tickets for the Sunday game at Planet Ice CMK if you so wish but must have numbers before Christmas.

PLAYER OF THE MONTH TROPHY. The winner of the Supporters Club trophy is voted for each month by members and the presentation will be made at the first home game of the following month. Once again the sponsor of these beautiful and individual trophies is RCM Partitions – Bob & Debbie Marshall. Bob and Debbie are long time supporters of Hockey in MK and our thanks go to them for their sponsorship. December's voting forms are now ready for collection for you to make your vote.

THE EQUIPMENT SPONSORSHIP GRID To get your name in the match night programme every week, sign up at the club stand. The basic equipment sponsors will receive a signed photograph of their sponsored player, and details of the special sponsorship deals can be seen at the club stand.

MERCHANDISE MALL. Shirt orders taken in October have been fulfilled and are now ready for collection. Childrens shirts in sizes from 2 –3 are also available but are limited in number at the moment.

CHRISTMAS SPECIAL OFFER ON CHILDRENS POLO SHIRTS

From now until Christmas the children's polo shirts sizes from 3yrs to 10yrs are at a special price of just £8.00 each to Supporters Club members

THE SUPPORTERS CLUB IS PROUD TO ANNOUNCE THEIR SPONSORSHIP OF MIKKO SKINNARI FOR THE REST OF THIS SEASON. YOUR CONTRIBUTION WILL BE MADE VIA THE 50/50 AND THE "SHIRT OFF HIS BACK" DRAWS. PLEASE CONTINUE TO GIVE GENEROUSLY SO THAT WE CAN SUPPORT MIKKO AND OUR TEAM.

SPECIAL SPONSORS TO
MICHAEL KNIGHTS
Keith and Lorna Main (KLM)

SPECIAL SPONSORS TO
MICHAEL KNIGHTS
Gary Cockram

www.icehockeyleague.co.uk

Connells

For all your property needs

Milton Keynes
01908 674141

Stony Stratford
01908 563993

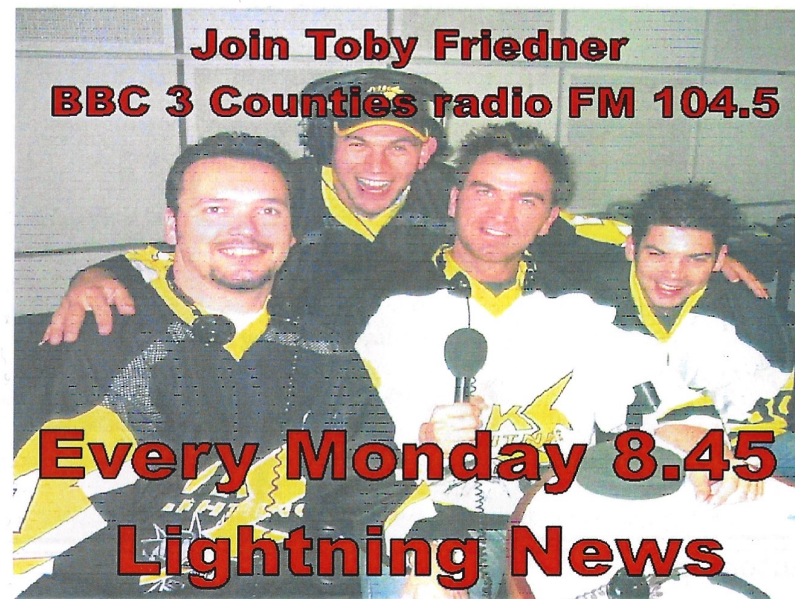
Bletchley
01908 375241

Newport Pagnell
01908 610805

Residential Sales & Lettings • Mortgage Services • Conveyancing • Surveyors • Land & New Homes

www.connells.co.uk

Join Toby Friedner
BBC 3 Counties radio FM 104.5



Every Monday 8.45
Lightning News

www.icehockeyleague.co.uk



Autograph:

www.icehockeyleague.co.uk

Player Profile

Name: Dean Campbell

Shirt Number: #17

Position: Forward

DOB: 29th July 1978

Place of Birth: Newport Pagnell

Status: single

Nickname: Dino

Former clubs; MK Juniors, MK Kings, Peterborough Pirates, Telford Wild Foxes

Earliest memory of playing: 'learn to play course' aged 13 with Mike Sirant

Biggest influence on your career: Dad

Best moment in hockey/sport: ... every time I score!

Worst moment in hockey/sport: being injured

Most admired players in hockey: Gary Clarke, Nick Poole, Dwayne Newman

Three words to describe yourself: ... Dirty Rotten Scoundrell!

Favourite food/drink: Guinness & Chinese

Ideal night in/out: OUT – meet up with the 'boys' in a pub, bite to eat, then hit a few bars!
IN – romantic night with Steff, chinese meal and watch a DVD

Superstitions; Don't change winnings ways

How do you think hockey could be improved in this country?: more and better media coverage

What event in the world would you pay to watch??: World Cup Final

What event would you pay to avoid watching??: Field Hockey

If you were not playing hockey, what would you be doing?: A Rock Star!!!

Ambitions: To travel around the world, be successful at work, and enjoy life

www.icehockeyleague.co.uk



Sponsor your favourite Lightning Equipment

Name		Player Gold	Player Silver	Player Bronze	Shirt	Skates	Stick
		£450	£300	£150	£100	£100	£60
1. Allen Sutton	T						
4. Michael Knights	R			Sylvia West			
5. Leigh Jamieson	A						
7. Phil Wooderson	C						T.O.G's
9. Greg Owen	K						
11. Mark Krater	S						Jo
14. Gary Clarke	U	Russell & Marcia					Belinda Elcox
17. Dean Campbell	I	Mike Piggott	Pat Corrigan				Scott Fair
22. Dwayne Newman	T				Diane, Simon & Harrison		Sarah Hudson
27. Mikko Skinnari	S			Danni Cox			
31. Barry Hollyhead	O						
50. Greg Randall	R	Keith & Lorna KLM					
55. Simon Howard	C						
91. Nick Poole	A			Carolynn Langley			Jane Hudson
18. Kieron Goody	R						
8. Rich Munnely	O						
16. Mark Conway	L						
	E						
	H						
	I						
	S						
	L						
	O						
	P						

www.icehockeyleague.co.uk



- Your name alongside your sponsored player on sponsors grid
- To arrange sponsorship contact The Club Stand on match nights

Helmet	Gloves	Shoulder Pads	Box	Leg Guards	Elbow Pads	Socks	LegTape
£25	£20	£15	£10	£5	£5	£5	£5
Ice Gems					Fancourt & Hamilton		
		B2 Promo Designs	Sonny & Mason	B2 Promo Designs			
Ice Gems			Paul & Jane Connor	Ice Gems			
			Andy & Sian Roles	Cats Protection League 01296 738558			
	Roy & Diana Warlow	B2 Promo Designs		B2 Promo Designs			
		Rob & Helen	Jo	Cai Krater			
			Lesley & Michelle	Bob & Deb RCM Partitions			
	Roy & Diana Warlow	Wheelchair Noize	Amy Taylor	Charlotte Hopkins	Thomas Gamba	Ashley Swain	Thomas Gamba
Marion Slade	Paul & Jane Connor		Diane,Simon & Harrison	Emma Lyford Brown	Bowler	Ashley Swain	
	Roy & Diana Warlow	Pat C		Lime Tree Pantry			
	Roy & Diana Warlow	Geoff Spring		Lime Tree Pantry			
	Kevin Slade	Vicky Chadwick					
	Phil Rees	Wheelchair Noize	Sophie Bassett	Allyson ABC Design			
	Paul & Jane Connor	Wheelchair Noize	Tina Marshall	Bob & Deb RCM Partitions			
	Roy & Diana Warlow		Travellers To Nottingham	Pat Corrigan	Luke W		
				Kim Cole	Chloe Hoy		
				Pat Corrigan	I Block Fan Club		

www.icehockeyleague.co.uk

Fixtures & Facts

Date	Opposition	H/A	Competition	Face Off	Result	Man of the Match
August						
Sat 31	Romford Raiders	H	ENPL	19.00	7-7D	N.Poole
September						
Sun 01	Invicta Dynamos	A	ENPL	17.15	5-2W	G.Owen
Sat 07	Chelmsford Chieftains	H	ENPL	19.00	9-BW	D.Newman
Sun 08	Haringey Racers	A	ENPL	17.15	8-4W	G.Clarke
Sat 14	Nottingham Lions	H	ENPL	19.00	6-0W	G.Owen
Sun 15	Peterboro Phantoms	A	ENPL	17.30	4-6L	L.Jamieson
Sat 21	Telford Wild Foxes	H	ENPL	19.00	13-2W	S.Howard
Sun 22	Nottingham Lions	A	ENPL	17.00	6-2W	G.Clarke
Sat 28	Haringey Racers	H	ENPL	19.00	11-1W	M.Skinnari
Sun 29	Romford Raiders	A	ENPL	17.15	4-6L	G.Owen
October						
Sat 05	Invicta Dynamos	H	ENPL	19.00	8-1W	M.Conway
Sun 06	Slough Jets	A	ENPL	18.15	3-4L	G.Clarke
Sat 12	Chelmsford Chieftains	H	ENPL	19.00	8-1W	B.Hollyhead
Sun 13	Telford Wild Foxes	A	ENPL	17.30	5-2W	N.Poole
Thu 17	Coventry Blaze	A	Challenge	20.00	1-6L	G.Randall
Sat 19	IOW Raiders	H	ENPL	19.00	8-4W	M.Skinnari
Sun 20	Romford Raiders	A	ENPL	17.15	1-2L	D.Campbell
Sat 26	Haringey Racers	H	ENPL	19.00	11-1W	D.Newman
Wed 30	Peterborough Phantoms	H	Challenge	19.30	9-7W	P.Wooderson
November						
Sat 02	Slough Jets	A	ENPL	19.00	2-2D	M.Skinnari
Sun 03	Telford Wild Foxes	A	ENPL	17.30	8-1W	P.Wooderson
Sat 09	Nottingham Lions	H	ENPL	19.00	11-0W	M.Conway
Sun 10	IOW Raiders	A	ENPL	18.30	5-5D	L.Jamieson
Sat 16	Romford Raiders	H	ENPL	19.00	7-3W	M.Skinnari
Sun 17	Invicta Dynamos	A	ENPL	17.15	4-4D	M.Knights
Sat 23	Swindon Lynx	H	ENPL	19.00	7-1W	G.Clarke
Sun 24	Haringey Racers	A	ENPL	17.15	9-2W	G.Owen
Sat 30	Slough Jets	H	ENPL	19.00	5-3W	S.Howard
December						
Sun 01	Slough Jets	A	CUP	18.15	5-2W	N.Poole
Sat 07	Swindon Lynx	A	ENPL	17.30	7-3W	G.Owen
Sat 14	IOW Raiders	H	ENPL	19.00	3-2W	B. Hollyhead
Sun 15	Swindon Panthers	H	Challenge	18.00	9-2W	M. Conway
Sat 21	Peterboro Phantoms	H	ENPL	19.00		
Sun 22						
Sat 28	Telford Wild Foxes	H	ENPL	19.00		
Sun 29	Peterboro Phantoms	A	ENPL	17.30		

www.icehockeyleague.co.uk

Date	Opposition	H/A	Competition	Face Off	Result	Man of the Match
January						
Sat 04	IOW Raiders	A	CUP	18.30		
Sun 05	Swindon Lynx	H	ENPL	18.00		
Sat 11	Invicta Dynamos	H	ENPL	19.00		
Sun 12	Chelmsford Chieftains	A	ENPL	18.30		
Sat 18	Invicta Dynamos	H	CUP	19.00		
Sun 19	IOW Raiders	A	ENPL	18:30		
Sat 25	England U20's	H	ENPL	19.00		
Sun 26	Swindon Lynx	A	ENPL	18.00		
February						
Sat 01	Swindon Lynx	A	CUP	18.00		
Sun 02	Slough Jets	H	ENPL	18.00		
Sat 08	Peterboro Phantoms	H	ENPL	19.00		
Sun 09	Invicta Dynamos	A	CUP	17:15		
Sat 15						
Sun 16	Slough Jets	H	CUP	18.00		
Sat 22	Swindon Lynx	H	CUP	19.00		
Sun 23	Nottingham Lions	A	ENPL	18.00		
March						
Sat 01	Romford Raiders	H	CUP	19.00		
Sat 02	Romford Raiders	A	CUP	17.15		
Sat 08	IOW Raiders	H	CUP	19.30		
Sun 09	Chelmsford Chieftains	A	ENPL	17.15		

Lightning Score Shown First

Playoffs to be played between March 15th & April 13th 2003

Key: ENPL - English National Premier League

CUP - English Cup

**** EXTRA GAME ****

Thursday 2nd January

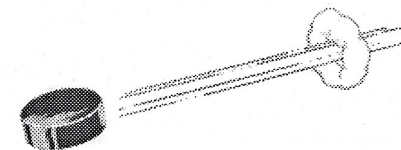
MK LIGHTNING v CANTON UNIVERSITY

Face Off 7.30pm

Hockey is a Dangerous Sport.

Keep your eyes on the puck

at all times!!



www.icehockeyleague.co.uk

OFFICIAL REFEREE'S SIGNALS



BOARDING
Pound closed fist into open palm of other hand. *Forcing a player into the boards.*



DELAYED PENALTY
Extends arm upwards and points to penalized player. *Penalty called after penalized team gains possession of puck.*



HOLDING
Clasp wrist of the whistle hand with the opposite hand. *Holding an opponent with hands or stick.*



CHARGING
Rotating clenched fists around each other. *A player who runs, jumps or charges an opponent.*



ELBOWS
Taps elbow of the whistle hand with other hand. *Using elbows in any way to foul an opponent.*



HOOKING
Tugging motion with both hands towards chest. *Impeding an opponents progress by hooking with a stick.*



CROSS-CHECKING
A forward and backward motion with both fists. *Cross-checking on opponent with the shaft of the stick.*



HIGH STICKS
Hold both fists clenched one above the other and above head. *Carrying or using stick above shoulder level.*



SLASHING
Chopping motion with one hand over the other. *Impeding progress of an opponent by slashing with a stick.*



INTERFERENCE
Crossed arms in front of the chest. *Impeding progress of an opponent not in possession of the puck.*



ROUGHING
Extends right arm from side with thrust. *Unnecessary roughness on an opponent.*



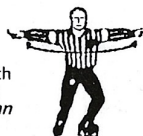
TRIPPING
Strike right leg with right hand below the knee. *Tripping an opponent with stick, knee, foot, arm or elbow.*



MISCONDUCT
Both hands on hips. *Continued misconduct after warning.*



SPEARING
Jabbing motion with both hands in front of body. *Spearing an opponent with the stick blade, or attempting to.*



WASH OUT
Both arms swing laterally across body palms down. *Goal disallowed or no offside after delay call.*



TIME-OUT
Use both hands to form a T in front of the chest.



ICING
Linesmans arms folded across the upper chest.

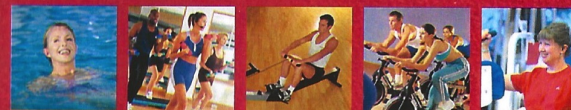


KNEEING
Slapped the knee with palm of hand. *Called when using knee to impede opponent.*

**SPECIAL JOINING FEE
OFFERS AVAILABLE***

**NO ANNUAL
CONTRACT**

Fit health and fitness into your life!

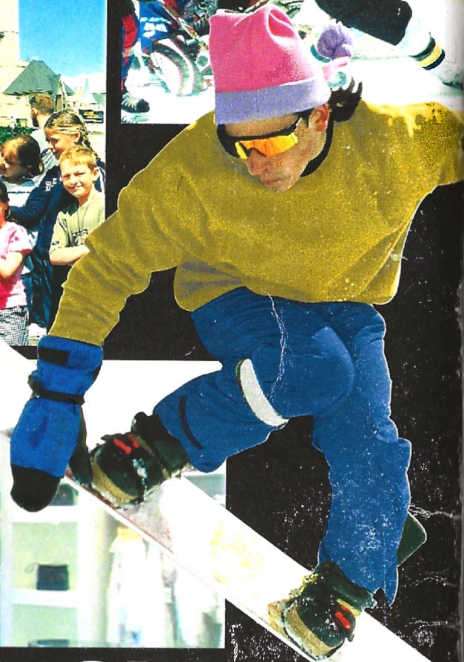


You can discover just what LivingWell has to offer – take a guided tour of our superb facilities which include everything you'd expect from our state-of-the-art gym to an inviting pool. And meet our friendly and helpful team who'll answer any questions you have on the healthy benefits of membership.

You can also enjoy great savings with our special offers!

ZIP ALONG TO LIVINGWELL TODAY

GO • CHILL



YET ANOTHER GREAT
PLACE TO SPEND YOUR
LEISURE TIME:

GO • MK LIGHTNING!

GO • MK

0870 120 1269

WWW.GOMK.NET

MILTON KEYNES