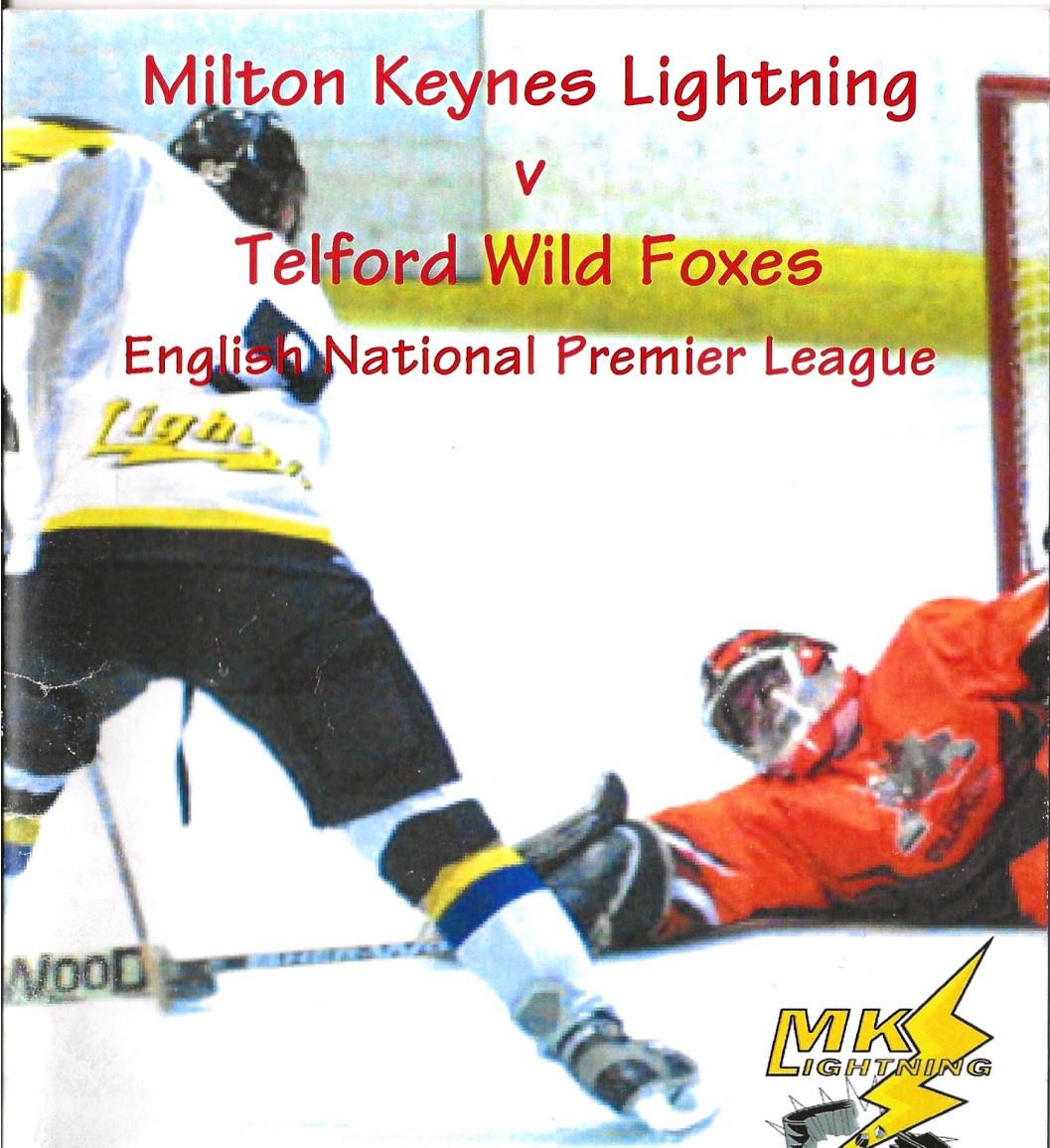


Milton Keynes Lightning

v

Telford Wild Foxes

English National Premier League



Saturday 28th December 2002

GO • MK LIGHTNING!

Two exciting new teams arrive in Milton Keynes



The Leon Cupra R

from **£16,995** on the road*

- Specification includes:
- 210bhp
 - Immobiliser and alarm
 - ABS, EDS and TCS • 6 speed gearbox
 - Electric front and rear windows
 - 6 CD autochanger • Front sports seats
 - Power steering • Remote central locking
 - Climatronic air conditioning • 17" alloy wheels
 - Driver's and front passenger's airbag & front side airbags



Milton Keynes SEAT

Proud
sponsors of

The Alhambra

from **£15,995** on the road*

Standard specification includes:

- Power steering
- Air conditioning
- Front electric windows
- Remote central locking
- Immobiliser and alarm • ABS
- Six speed gearbox (manual versions)
- Anti dazzle rear view mirror • Seven seats
- Driver's, passenger's & front side airbags

Milton Keynes Lightning



Model shown SEAT Ibiza Sport

The New Ibiza

from **£7,995** on the road*

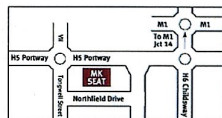
- Standard specification includes:
- Radio/single CD with 8 speakers
 - Air conditioning • Driver's airbag
 - Passenger's airbag with de-activation
 - Remote central locking with deadlocks
 - Cryptocode immobiliser • Central sunvisor
 - Power steering • Reflector in front door panel
 - One-touch electric front windows with anti-squeeze facility

Milton Keynes SEAT

Northfield Drive, Milton Keynes.

Tel: 01908 351199

www.seat.co.uk



Fuel consumption and CO₂ emissions measured in accordance with EU Directive 99/94. Urban: 19.1-49.6mpg / 5.7-14.8 ltr per 100km, Extra Urban: 33.2-78.5mpg / 3.3-8.5 ltr per 100km, Combined: 26.2-64.2mpg / 4.4-10.8 ltr per 100km, CO₂: 139-228g/km

*ON THE ROAD LIST CASH PRICE INCLUDE DELIVERY, NUMBER PLATES, VALUE ADDED TAX, 12 MONTHS' VEHICLE EXCISE DUTY BASED ON THE CO₂ EMISSION LEVEL AND VEHICLE FIRST REGISTRATION FEE AS APPLICABLE AT THE TIME OF SUPPLY. VAT IS CHARGED AT 17.5% ALL PRICE AND PRODUCT INFORMATION CORRECT AT TIME OF GOING TO PRESS. MODELS SHOWN SEAT IBIZA SPORT, LEON CUPRA R AND ALHAMBRA S.



Lightning Directory

Executive Committee Members:

Harry Howton (Chairman)
Vito Kausa (General Manager)
John Jamieson (Team Manager)
Nick Poole (Players Rep)
Simon Howard (Players Rep)

Associate Committee Members:

Dave Fairhurst (MK Thunder)
Pete Ledgard (MK Juniors)
Pat Corrigan (Supporters Club)
Simon Hunter (Supporters Club)

Coach:

Nick Poole

Asst. Coach: Simon Howard

Programme Contributors:

MKIHS, MKJHC, Paul Brookman

Sponsorship & PR:

Vito Kausa, Chris Piggott, Ian Cook

Match Night Announcers:

Jacqui Dennis & Ian Cook

Official Scorer:

Simon Hunter

Timekeeper:

Martin Waters

Penalty Boxes:

Ernie Ovenden

Goal Judges:

Roy Langley

"MK Jesters"

Match Night DJ:

David Stevenson

First Aid:

Pete Nolan

Photographer:

Ian Summers

WebSite:

www.mk-lightning.com

Box Office No:

01908 696696

Face Off Times:

Saturday 19.00hrs

Sunday 18.00hrs

Admission Prices

Adult £6.50

Child £3.50

Family (1Ad+2Ch) £10

Family (2Ad+2Ch) £16.50

Concessions £5.00

Programme Edited By:

Lightning Strikes

Programme Production:

Kall Kwik MK

This programme is published on

behalf of the MK Lightning.

Opinions expressed within are not

necessarily representative of the

publishers. All material is

copyright and may not be

reproduced without the written

consent of the publisher.

Tickets are issued subject to

regulations governing the

admission of spectators. The

management reserves the right of

admission. Alcohol may not be

brought into the premises. Milton

Keynes Lightning merchandise is

only available through approved

outlets within the arena. No flash

photography is allowed during the

game.

From The Bench....

Seasons Greetings and welcome back to the 'Thunderdome' for our last match of the calendar year. We aim to give you all one last Christmas present tonight with a win against the Telford Wild Foxes. I hope everyone had a great Christmas enjoying good food, family and friends and of course the odd spirit. Hopefully the team have not indulged themselves too much as we have had a full week off. A few of the players might be carrying an extra pound or two but I am sure they will have it worked off in no time. Especially since Mark Krater and Leigh Jamieson have received directions to the gym during our secret Santa gift swapping last week. This is the reason we did not make it up to the bar earlier after the Peterborough game. Needless to say we had a lot of laughs and quite a few gentle digs at each other.

Back to last week's game, I hope everyone enjoyed the suspense of the fast paced encounter between the leagues top two sides. The team played hard and although I would have liked the two points for the win I thought a draw was a fair result (of course had a certain goal been allowed who knows what may have been - such is life). Also I thought the crowd was amazing and there was a great atmosphere in the building. Hopefully we can duplicate our performance this Sunday at Peterborough and come away with a victory. It would be great to see you all out there in force. As for Telford tonight, enjoy the match, and I hope they have come to play hockey the way it is supposed to be played. Once again Merry Christmas and all the best in 2003.

Thanks for your support.

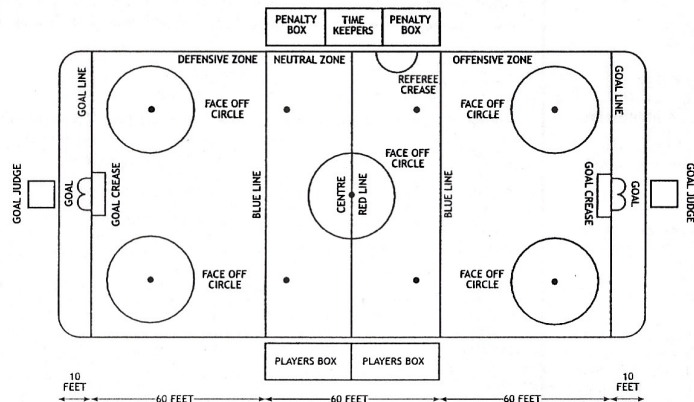
Nick

NO FLASH PHOTOGRAPHY IS ALLOWED DURING THE GAME. ANYONE PERSISTING WITH THIS, MAY BE ASKED TO LEAVE THE ARENA.

**Signing Autographs after tonight's game
Michael Knights**

www.icehockeyleague.co.uk

THE ARENA



Game Officials

The referee controls the game. He calls all the penalties and must decide the legality of goals, though sometimes he will call time and ask his linesmen for an opinion before he makes the final decision. The duty of the linesmen is to determine offside and icing. They drop the puck for face offs. They chase the puck after stoppage of play.

Where is the Game played?

The game takes place in the 'rink' which is approximately 200 feet long by 85 feet wide and is made of water, frozen on top of concrete, producing the ice surface. The arena has rounded corners.

What are all the lines painted on the ice for?

The red line shows the centre of the ice and regulates how far the players can shoot and pass. The blue lines split the rink into zones. The zone behind your own team's blue line is your defending zone and behind the other team's blue line is your attacking zone. The bit in the middle is the neutral zone.

And the circles?

These are the face-off circles. Two just in front of and either side of each goal and one in the middle. These are where play starts and restarts after an interruption in play. Play always starts in the middle, but where it restarts, depends on what has happened in the play.

The Players.

There are six players for each team on the ice at any one time. Those six players will keep on changing throughout the game. Who is on the ice at any one time is a complex business which is determined by each team's coach.

There are 3 types of player:

Three forwards, who line up at the front and are in charge of offensive play i.e. trying to score goals. They are known as, Left Wing, Centre and Right Wing.

Two defencemen, one on the right and one on the left who try to prevent the other team scoring.

One Goaltender or Goalie, or Netminder.

How Long Does a Game Last?

There are 3 periods of 20 minutes each but each time that play is interrupted the clock is stopped which means that each period can go on a lot longer than 20 minutes. There is a 15 minute break between each period.

entering the Thunderdome tonight

Telford Wild Foxes

Telford. have stepped up to the Premier League this season from the National League. Last year, Telford were challenging for both league & cup honours, finally losing out at the end of the season.

They have found this league tough and fraught at times, with some patchy results showing their potential ability when they 'play' hockey.

Ones to watch;

Keith Mitchell #6 Forward – Import

Has come to the UK for his last 'junior' season from Summerland Sting. This 19 year old, 5'11", 175 lbs. is a talented offensive player, who has also played in Revelstoke for Revelstoke Grizzlies of the KIJHL. Last season with the Sting, won the Midget Provincials division finals beating the Sicamous Eagles. Last seasons stats: (GP) 50 33+44=77

Daniel Heslop #33 Netminder – British

Another player that decided to remain in Telford colours this season, having had offers to move up a league.

Last seasons stats: ENHL 974 minutes played 3.88 GAA

Daniel Mackriel #19 Forward – British

A young british forward with great potential, has this season already become the teams leading points scorer, and having only played a few games last year for the team, showed he can find the net.

Last seasons stats: ENHL (GP) 7 11+6=17 12 PiM

Mark Hazelhurst #3 – Defence – British

Veteran defenceman Hazelhurst is back with his home town team after quitting on the eve of the season to re-join Cardiff Devils. He had agreed during the summer to play for Telford this season, but quit at the club to play BNL. Now back in the Wild Foxes fold, bolstering the defence, the 30 year old has made over 600 senior game appearances.

Last seasons stats: Cardiff Devils (BNL) 0+6=6 72 PiMs

Junior News

u10s South West Conference – Challenge – Saturday 21st December

Milton Keynes Storm (1) vs. (8) Romford-Invicta Thames Terrors

MK Storm played very well against very strong opposition. The visitors raced away to a 0-5 first period lead, as the home team struggled to get to the opponents net and cause any serious threat. With renewed vigour, MK started the second session well, and soon found the back of the net, Brad Hammond scoring assisted by Ross Tippit and Jamie Miller. This lifted the home teams' spirits and they battled hard, restricting the Terrors to only three more goals in the second period.

All in all, the home team played with great spirit throughout against a much greater experience team, and they all left the ice - smiling having had great fun and enjoyed the experience.

MoM for the Storm was Kirtie Randle, with Spirit of the Game going to Josh Wayling.

Womens Division One – Southern Conference – Sunday 22nd December

MK Falcons (12) vs. (1) Peterborough Penguins

Period Scores 3-0, 5-1, 4-0

The Falcons were virtually back to full strength for this game, which we needed to win to keep the pressure on the chasing pack. The Falcons opened the scoring with a goal from Nonie Dodwell at 02:17 assisted by Jo Wingate. Then a second was added at 05:39 by a goal from Michelle Ponter also assisted by Jo Wingate. The Falcons were not running on full throttle and the passing wasn't at its normal level but went further ahead at 13:10 on a powerplay from Lydia Howton. Within 1 minute of the period, break the Falcons scored their fourth goal from Nat Bullen. Peterborough then took advantage of the Falcons not clearing their zone to score at 17:35. But only for the Falcons to bounce back at 18:03 with Nonie's 2nd of the game. Then two quick goals in succession at 19:13 and 19:33 from Nat and Jenna Clarke her first goal of the season. With 1 second left in the period Nonie got her hat trick. In the 3rd period the Falcons carried on from where they left off and made it eight at 35:24 from Lydia Howton her second of the game. Then two goals within six seconds of each other at 39:55 and 40:06 from Shelley Owen. The Falcons finished off what was a fairly straight forward win at 44:25 with Nat Bullen getting her third. The Falcons have finished 2002 still at the top of the league table and are looking forward to 2003. 'MoM' Nonie Dodwell

ENHL - South – Saturday 14th December

Peterborough Islanders (2) vs (1) MK Thunder

Period Scores: 2-0, 0-1, 0-0

Shots on Goal: On Peterborough's - Daniel Jennings – 31

On MK Thunder's - Mark Woolf – 35

Scorers:

Peterborough Islanders: David Micheli 1+1, Tony Dawson 1+0, Matt Whitwell 0+1,
Lewis Wooding 0+1.

MK Thunder: Paul Jamieson 1+0, Andy Watt 0+1.

Thunder again paid the price for being slow starters when they conceded two first period goals in Peterborough last Saturday. In a game that was very evenly matched, an early advantage was crucial and it was Islanders who wanted it the most in the early exchanges as Thunder struggled to get going. Tony Dawson put Islanders in front mid way through the period and David Micheli extended the lead just before the period break.

Thunder came out for the second period showing more determination, and gradually turned the tide against Islanders with some good offensive play.

This was rewarded mid-way through the period when Paul Jamieson finally found a way past Daniel Jennings in Islanders goal, the assist going to Andy Watt.

The game from there on was a stalemate with both teams showing promise but squandering the rare opportunities they had, and frustrations began to show in the last period when both teams had players thrown out for roughing.

Tomorrow:

U19s Vs Guildford @ 17.30

Saturday 4th January

MK Thunder Vs Birmingham Barons @ 19.00

League Tables & Round Up

ENGLISH NATIONAL PREMIER LEAGUE

sponsored by www.icehockeyleague.co.uk

Team	GP	W	L	D	GF	GA	PTS	PIM
Slough Jets	32	20	6	6	150	105	46	772
Milton Keynes Lightning	29	20	4	5	189	83	45	457
Peterborough Phantoms	24	21	2	1	177	86	43	433
Swindon Lynx	28	16	9	3	168	113	35	510
Isle of Wight Raiders	29	15	11	3	159	114	33	391
Chelmsford Chieftains	27	13	8	6	154	116	32	588
Invicta Dynamos	27	14	10	3	105	104	31	342
Romford Raiders	31	11	15	5	141	164	27	629
Telford Wild Foxes	25	5	19	1	83	180	11	548
Nottingham Lions	26	3	22	1	56	148	7	284
Haringey Racers	22	3	19	0	57	172	6	494
England U20	16	0	16	0	17	71	0	147

League roundup

Lightning kept their unbeaten home record, sharing the point with the Phantoms in an eight goal thriller. Slough hold on to second edging Swindon by the odd goal in seven, while Nottingham take the points against the Wild Foxes.

Saturday's results:

Jets 4 - 3 Lynx
Lightning 4 - 4 Phantoms
Lions 4 - 3 Wild Foxes
IOW(Raiders) 12 - 0 Racers

Sundays results;

All change at the top, as Slough move ahead by beating the Lions.
Phantoms win closes the gap at the top, while there were wins for the IOW and Chelmsford.

Lions 1 - 6 Jets
Dynamos 3 - 4 IOW(Raiders)
Wild Foxes 1 - 4 Chieftains
Phantoms 6 - 1 Raiders(ROM)

Leading Scorer	TEAM	GP	G	A	PTS	PIM
GARY CLARKE	(MIL)	25	55	30	85	42
NICK POOLE	(MIL)	25	23	56	79	8
KYLE AMYOTTE	(CHE)	21	39	31	70	18
MERV PRIEST	(SWI)	21	36	34	70	18
DAVID KOZIER	(IOW)	19	33	25	58	54
BRAD KENNY	(IOW)	19	33	25	58	54
ROB DOUGLAS	(ROM)	23	21	30	51	16
DANNY MARSHALL	(ROM)	21	15	34	49	4
ANDREW POWER	(CHE)	14	18	30	48	12
GREG OWEN	(MIL)	23	31	16	47	52

Netminders	TEAM	GP	MIN	SOG	GA	SAV%	GAAV
ALLEN SUTTON	(MIL)	10	600	230	18	92.17	1.80
BARRY HOLLYHEAD	(MIL)	15	900	507	53	89.55	3.53
MATT VAN DER VELDEN	(INV)	18	1060	668	74	88.92	4.19
CHRIS DOUGLAS	(CHE)	21	1180	770	91	88.18	4.63
DANIEL HESLOP	(TEL)	14	785	691	85	87.70	6.50
SIMON SMITH	(SLO/ROM)	22	1253	715	89	87.55	4.26
ANDY MOFFAT	(IOW)	17	989	657	80	87.82	4.85
DAVID WHITWELL	(PET)	13	764	420	54	87.14	4.24
MATHIEU DAVIDGE	(ROM)	17	927	590	80	86.44	5.18
GREG ROCKMAN	(SWI)	6	360	174	24	86.21	4.00



INDIAN CUISINE

La HIND[®]

RESTAURANT

Tastefully Indian

AT STATION SQUARE, CMK

www.la-hind.com

We offer Traditional Indian Cooking.
Extensive Balti and vegetarian dishes are available.
Seating for up to 120 people. We cater for large parties.
Ample parking space. Non smoking area available.



Most takeaways are packed in a made-to-measure box, so no more messy takeaway food!

Sunday Family Buffet 12 noon-5.00pm
Eat as much as you like - Adults £8.50 Children: under 12: £4.90 under 5: Free

Elder House, 502 Elder Gate, Station Square,
Central Milton Keynes, MK9 1LR

Tel: 01908 675948/667331

Fax: 01908 675429

Email: lahind@amservice.com

OPEN 7 DAYS A WEEK

Monday - Saturday

Lunch 12.00 noon to 2.30pm Evening 5.30pm to 11.30pm

Friday Lunch Closed Evening 5.30pm to 11.30pm

Sunday All day from 12.00 noon to 11.00pm

No added food colourings

HALAL



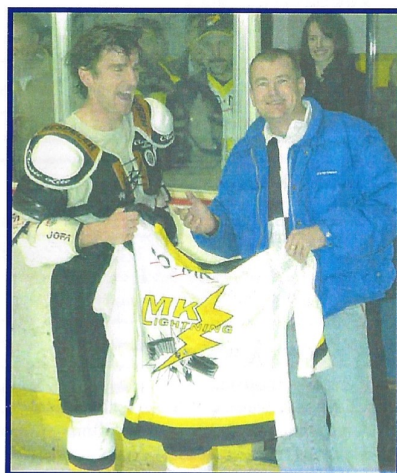
To find La HIND just look right on your way out of the station

www.icehockeyleague.co.uk

www.icehockeyleague.co.uk

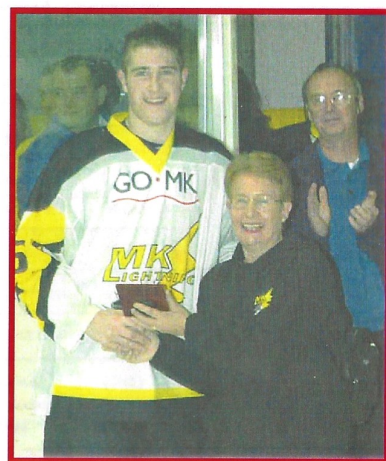


Thank you to everyone for all your support by throwing teddies!



Shirt Off His Back
21st December

Congratulations



Man of the Match
21st December
Leigh Jamieson
Well Done !!

Lightning Stats

	GP	G	A	Pts	PIMs
Paul Gore	5	0	0	0	2
Michael Knights	22	0	11	11	75
Leigh Jamieson	26	3	12	15	26
Phil Wooderson	29	4	7	11	8
Chris McEwen	6	1	1	2	2
Rich Munnelly	8	0	3	3	0
Greg Owen	26	34	16	50	22
Mark Krater	26	6	10	16	14
Gary Clarke	29	61	33	94	46
Mark Conway	12	3	6	9	4
Dean Campbell	27	10	18	28	28
Kieron Goody	15	2	0	2	4
Geoff O'Hara	27	2	6	8	44
Dwayne Newman	29	3	26	29	77
Mikko Skinnari	29	3	29	32	32
Greg Randall	22	15	22	37	10
Simon Howard	22	6	6	12	54
Nick Poole	29	24	66	90	18
Paul Jamieson	4	0	0	0	0
Ross Bowers	1	0	0	0	0
Allen Sutton	28	0	0	0	2
Barry Hollyhead	27	0	2	2	24

EXCLUDES Challenge Games

	GP	Mins	Shots	GA	Save %	GAAv
Netminders						
Barry Hollyhead	27	1212	621	65	89.53	2.15
Allen Sutton	28	600	230	18	92.17	1.8

Match report..... Match report.....

Lightning vs. Phantoms – Saturday 21st December

Clarke 1+1, Poole 0+2, Jamieson, Skinnari & Randall 1+0, Owen 0+1
Nets: Hollyhead 33/4 (%)

What a result! What a game as the two sides likely to finish in the top two of the English National Premier League battled it out at Planet Ice on Saturday. Few would dispute that a draw was anything but a fair result in a match which saw two evenly matched sides provide one of the most entertaining home encounters for a long time. The 1,387 crowd was the biggest attendance in nearly two years at Planet Ice, as well as being the largest crowd for a game immediately pre-Christmas since 1995. And no-one went away disappointed although Lightning might have snatched both points had Gary Clarke's "goal" at 38mins 4secs not been ruled out by referee Mick Litchfield. He apparently had blown his whistle to protect netminder, David Whitwell, before the puck, scrambled in, had crossed the goal line. As it was it was local teenager Leigh Jamieson who was to prove the hero. Phantoms took the lead in the 10th minute when Duncan Cook set up Craig Britton to fire home from distance out on the right hand side. Five minutes later Doug McEwen showed the kind of class which has made him one of the country's most respected players.

McEwen put on a sudden burst of speed to shoot high into the net past Barry Hollyhead, giving the visitors a 2-0 advantage. Clarke looked destined to score at the left post when Britton impeded him – and the Peterborough man was duly given a four minute penalty.

That gave Lightning their chance to get back in the match. They did so when Mikko Skinnari smashed the puck home from just inside the blue line on the right of goal in the 18th minute. Lightning drew level seconds after Clarke left the penalty box in the 23rd minute. He went one on one with Whitwell but his shot hit the pipework with Nick Poole collecting for Clarke to fire in. By this stage Lightning had the upper hand and that was emphasised as Greg Randall, returning from injury, finished off a move which started with Chris McEwen's long pass out of defence to Greg Owen. Owen set up Randall to score in the 35th minute. Clarke's no goal incident was followed by a Phantoms timeout which led 90 seconds later to a goal from Cook on 39mins 29secs. Home hearts sank when Doug McEwen scored his second goal in the 42nd minute.

Then teenager Jamieson stunned Phantoms with a blue line blast, which rocketed into the net with 4mins 5secs left to make it 4-4, this was the last goal of this tense game.

Tired of waiting in a queue to be able to watch
your MK Lightning each week....??

Why not buy your tickets in advance..!!
Cash, Cheque and also Credit Card facilities available

Call the Booking Office to ensure you don't have to
wait for your seat to watch the best
entertainment each weekend.

Call 01908 696696

Doors Open On Match Night at 6pm

www.icehockeyleague.co.uk



© Ian Summers

www.icehockeyleague.co.uk

MK Lightning

can offer a full range of
Sponsorship & Corporate opportunities



Match Night sponsorship – the special way to enjoy the game

You and your friends can enjoy the game in your own private suite overlooking the arena, whilst enjoying a hot or cold buffet and your own bar and waitress service.

Optional extra's can be built into making your night special including presenting the Man of the Match award, having a pre-match tour of the facility, personalised match night memorabilia and a post match meet the players session. A great way to have fun with friends, or to celebrate a special occasion, or as a corporate night with colleagues.

Prices start from only £15 per head, including entrance to the match.

Team & Player Sponsorship – you can be part of the team

Do you have a favourite player? Would you like to personally contribute to the team and have your name associated with a successful sports team? Maybe you and your friends have a fan club that want to sponsor a player.

Personal player

sponsorship gets your name in the match night programme, announcements made during the game and tickets (certain packages only) to watch your favourite player.

Want to be part of the winning team?

For details of sponsorship

Call our hotline now

01908 694239 or email marketing@mk-lightning.com

Match night sponsorship

Programme advertising

Schools & community programmes

Personal player sponsorship

Rink side advertising

Corporate match nights

Equipment sponsorship

Arena banner advertising

Parties and special occasions

www.icehockeyleague.co.uk

PHYSIO

Using ultrasound, electrotherapy & muscle energy techniques to treat sports injuries & help towards a speedy recovery.

OSTEOPATHY

Used to help alleviate joint pain, (specifically back pain). Uses a variety of techniques to manipulate joints back to a normal position.

CRANIO-SACRAL THERAPY

For the treatment of migraine, sinusitis, asthma, digestive problems, tension and anxiety. A very relaxing and gentle treatment.

CHIROPODY

Treatment for common foot disorders like: corns, verrucas, bunions, athletes foot & nail conditions. Don't wait to reap the benefits of healthy feet!

RE-HAB GYM

All the latest C.V. And weight bearing equipment that is heart rate monitor compatible. Used for a quick recovery from injury.

MASSAGE

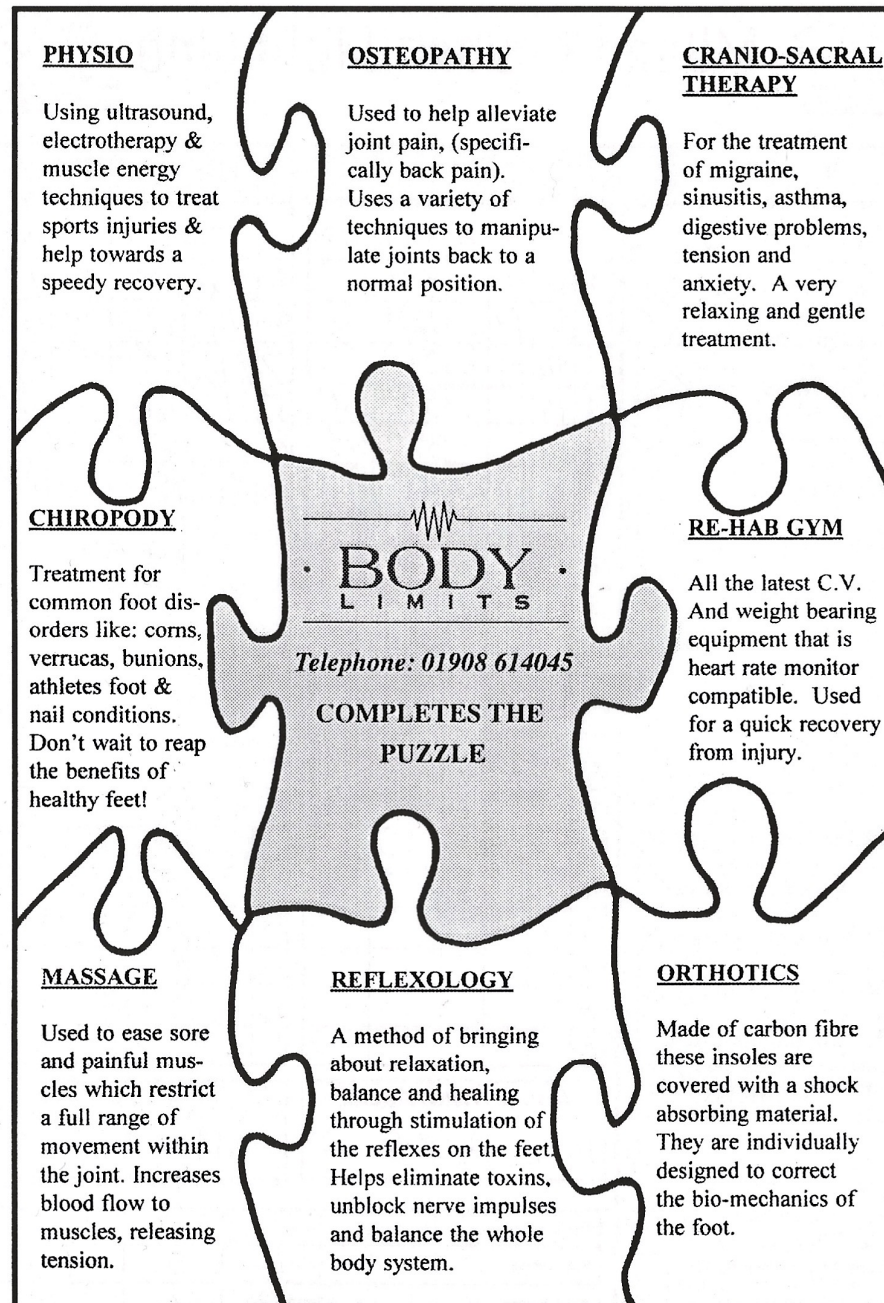
Used to ease sore and painful muscles which restrict a full range of movement within the joint. Increases blood flow to muscles, releasing tension.

REFLEXOLOGY

A method of bringing about relaxation, balance and healing through stimulation of the reflexes on the feet. Helps eliminate toxins, unblock nerve impulses and balance the whole body system.

ORTHOTICS

Made of carbon fibre these insoles are covered with a shock absorbing material. They are individually designed to correct the bio-mechanics of the foot.



www.icehockeyleague.co.uk



Milton Keynes Lightning



PLAYERS	GOALS						PENALTIES			
	G	A	A	Time	PP/SH		No	Offence	Dur	Time
1. Allen Sutton ✓							11	Interf.	2	9 ³⁴
4. Michael Knights (A) ✓	1	91	16	3 ⁵¹			5	Holding	2	15 ⁵⁰
5. Leigh Jamieson ✓	2	20	17	22 ²⁴			7	Interf.	2	29 ⁵⁸
7. Phil Wooderson ✓	3	14	91	5 25 ²¹			17	Hi Sticks	2	37 ⁵²
8. Chris McEwen ✓	4	14		30 ⁰²	SH		14	Tripping	2	41 ³⁸
9. Greg Owen	5	14		39 ⁴⁶	SH		16	Interf.	2	52 ⁵⁴
11. Mark Krater ✓	6	14	50	27 47 ⁴¹	PP					
14. Gary Clarke ✓	7	14	27	91 50 ⁴⁷	PP					
Sponsored by: Barfordian	8	22	91	14 53 ³⁹	SH					
16. Mark Conway ✓	9	27	91	14 58 ¹⁵						
17. Dean Campbell (A) ✓	10	50		59 ⁵⁹						
18. Kieron Goody ✓	11									
20. Geoff O'Hara ✓	12									
22. Dwayne Newman (C) ✓	13									
Sponsored by: MK Seat	14									
27. Mikko Skinnari ✓	15									
Sponsored by: Barfordian	16									
31. Barry Hollyhead ✓	17									
50. Greg Randall (A) ✓	18									
55. Simon Howard ✓	19									
Sponsored by: MK Seat	20									
91. Nick Poole ✓										
Sponsored by: MK Seat										
Coach: Nick Poole										
Ast. Coach: Simon Howard										
Team Manager: John Jamieson										
Team Medic: Pete Nolan										

Man of Match Award:

14 CLARKE

Tonight's Referee

MAELER

Period Score	1st	2nd	3rd	Final
Lightning	1	4	5	10
Wild Foxes	0	0	2	2



Telford Wild Foxes



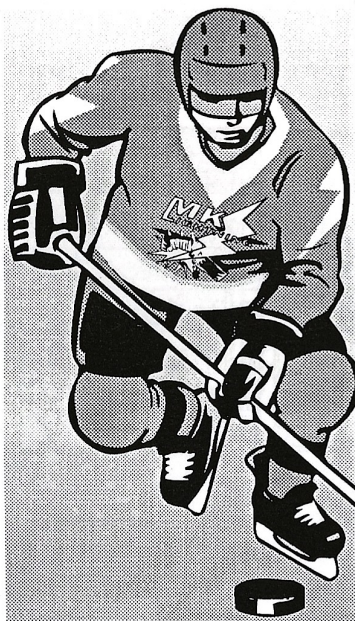
PLAYERS	GOALS						PENALTIES			
	G	A	A	Time	PP/SH		No	Offence	Dur	Time
3. Mark Hazelhurst	1	15		51 ⁰²			11	USC	2	6 ⁵⁴
5. Ashley Stanton	2	9	77	19 55 ³²			9	Interf.	2	13 ⁴⁷
6. Keith Mitchell	3						11	Tripping	2	30 ²⁰
7. Marc Lovell ✓	4						9	Xcheck/USC	2+2	46 ⁴¹
8. Stuart Bates	5						20	Hooking	2	49 ²⁵
9. Jared Owen ✓	6									
10. Graham Oldham	7									
11. Jason Parry ✓	8									
15. James Clarke ✓	9									
18. Dillan Leslie-Rowe	10									
19. Daniel Mackriel ✓	11									
20. Ryan Stanton ✓	12									
21. Tom Carlon	13									
28. Mike Roden	14									
30. Daniel Brittle n/m ✓	15									
33. Daniel Heslop n/m ✓	16									
35. Johan Gille	17									
36. Simon James ✓	18									
77. Adam Brittle ✓	19									
2 FRANCES ✓	20									
14										
Coach: Rich Clarke										

Man of Match Award:

30 BRITTLE

TONIGHT'S LINESMEN

Shots on Goal	1st	2nd	3rd	Final
Lightning	14	18	23	55
Wild Foxes	4	5	7	16



LIGHTNING COVERAGE!

For the very latest reports
on all MK Lightning games

Milton Keynes
Citizen
Sunday
Citizen

ADVERTISING: 01908 371133

EDITORIAL: 01908 372279

e-mail: info@miltonkeynes.co.uk
<http://www.miltonkeynes.co.uk>

Do the 'Wobblies' with Nick Poole.

The "Wobblies", is a course for potential ice hockey players, who are interested in joining the Milton Keynes Junior Ice Hockey Club. The course allows these players to experience the sport of ice hockey, by wearing a helmet and using a hockey stick and plastic puck. The course is aimed at children under the age of twelve.

Courses are organised by the MK Junior Club, under the direction of Nick Poole.

For further information contact, Alison Anders on
01908 267135

HOCKEY IS A FAMILY SPORT !

PLEASE SHOW CONSIDERATION TO YOUR FELLOW HOCKEY SUPPORTERS
BY REMAINING SEATED AT ALL TIMES WHILST PLAY IS IN PROGRESS.

THANK YOU

www.icehockeyleague.co.uk

Kall Kwik Milton Keynes
proud to be supporting
MK Lightning's Inaugural season



Make Some Noise
For Your...MK LIGHTNING !!

Kall Kwik
PRINT COPY DESIGN

Tel: 01908 605456

Fax: 01908 674366

www.icehockeyleague.co.uk



Fantastic Holidays In Europe & Beyond

New Years Party	Dec 30th - Jan 2nd
Valentines Weekend	Feb 14th - 16th
Super City Break	Feb 28th - Mar 2nd
Chocolates & Lace Bruges	Apr 4th - 7th
Scotland All Inclusive	Apr 7th - 11th
Malta	Apr 10th - 17th

Just a small selection of Holidays available.

Contact Barfordian for more details

Barfordian Coaches

Supporting and Transporting

Milton Keynes Lightning

Call today for a FREE Brochure

01234 355440

www.icehockeyleague.co.uk



Milton Keynes Ice Hockey Supporters Club News

A very warm welcome is extended to the Telford Wild Foxes and all the travelling fans. Enjoy the match and we wish you a safe journey home afterwards and a Happy Christmas. Children under the age of 16 are not allowed to remain in the Licensed bar after 9.30pm. The family room is available after that time, access is through the door leading into A block. All children under the age of 12 must be supervised by an adult in the family room please.

Supporters Club Committee for this year are: Pat Corrigan, Debbie Marshall, Allyson Jones, Melanie Chandler, Roy Warlow and Simon Hunter. Any time you wish to contact us you may do so at the Supporters Club stand, we are always available to you.

SHIRT OFF HIS BACK. Tickets are available from our seller going around the rink, and at the Club stand. The draw will be made after the second interval by a young fan and presented by the player at the conclusion of the match. The whole of the income from this draw goes directly to the team so everyone's contribution is very important.

50 / 50 DRAW. The sellers will be at the top of the concourse, and in the reception area before the game starts. They will be around the rink and also at the Club stand during the match. A young fan will be asked to make the draw at the beginning of the third period and the winner should come to the stand to collect their prize. 50% of the take goes in prize money and 50% goes to the club and used towards our sponsorship of Mikko Skinnari's wages. Thank you all for your continued support.

SPONSORS SIGNED PHOTOGRAPHS are now at the club stand for those of you who have sponsored a player. Please come and collect them this week.

SUPPORTERS CLUB MEMBERSHIP. If you have not already done so, collect your membership card and personalised LIGHTNING key ring from the club stand tonight. There are many benefits to joining, priority entry to all social events, special rates to travel on the coach, discounts on some of the merchandise, 5% discount on your LIGHTNING shirt, and special social events with the players and management.

The decision was taken at the last full committee meeting to make the Milton Keynes General Hospital S.C.B.U. (Special Care Baby Unit) our nominated charity this year. We shall be having special fund raising events for them during the season. As many of you will be aware, it often has to send very ill babies to other hospitals due to a shortage of funds and we want to give our help from the Supporters and team, so please keep your eyes on this space for the details. We will also have information of the Club stand on match nights. Our thanks go to Neil, a long time Milton Keynes supporter, who has donated his collection of lapel pins to be sold in aid of the SCBU. We are selling them at just £2.00 each on the club stand and the whole of the money collected will start off our appeal.

TICKETS FOR THE ADULT CHRISTMAS PARTY ON 30th DECEMBER ARE NOW ON SALE AT THE CLUB STAND PRICED AT JUST £5.00 FOR MEMBERS AND £10.00 FOR NON MEMBERS

THERE WILL BE A BUFFET, MUSIC, AN AUCTION AND A RAFFLE WITH A TV/DVD COMBI AS THE FIRST PRIZE. THE LIGHTNING PLAYERS AND MANAGEMENT WILL BE JOINING US AND THE DOORS OPEN AT 8.00PM - MUSIC UNTIL 2.00AM (IF ANYONE IS STILL FIT ENOUGH)

www.icehockeyleague.co.uk

BUS BUSINESS. The coach for the weekend away at the Isle of Wight leaved from the Zamboni entrance in the car park at Planet Ice at 8.00am Saturday 4th January. So that we can get away on time please be there by 7.45. We will be catching the ferry from Portsmouth to Ryde and book into the Hotel when we arrive. We meet at the rink 30 minutes before face off so there will be about 5 hours for Browsing around the Island, eating etc. before we go to the match. We depart the hotel around 11.00am on Sunday to arrive back in MK by 4.00pm approx. We can arrange for match night tickets for the Sunday game at Planet Ice CMK if you so wish but must have numbers before Christmas.

PLAYER OF THE MONTH TROPHY. The winner of the Supporters Club trophy is voted for each month by members and the presentation will be made at the first home game of the following month. Once again the sponsor of these beautiful and individual trophies is RCM Partitions – Bob & Debbie Marshall. Bob and Debbie are long time supporters of Hockey in MK and our thanks go to them for their sponsorship. December's voting forms are now ready for collection for you to make your vote.

THE EQUIPMENT SPONSORSHIP GRID To get your name in the match night programme every week, sign up at the club stand. The basic equipment sponsors will receive a signed photograph of their sponsored player, and details of the special sponsorship deals can be seen at the club stand.

MERCHANDISE MALL. Shirt orders taken in October have been fulfilled and are now ready for collection. Childrens shirts in sizes from 2 –3 are also available but are limited in number at the moment.

CHRISTMAS SPECIAL OFFER ON CHILDRENS POLO SHIRTS

From now until Christmas the children's polo shirts sizes from 3yrs to 10yrs are at a special price of just £8.00 each to Supporters Club members

THE SUPPORTERS CLUB IS PROUD TO ANNOUNCE THEIR SPONSORSHIP OF MIKKO SKINNARI FOR THE REST OF THIS SEASON. YOUR CONTRIBUTION WILL BE MADE VIA THE 50/50 AND THE "SHIRT OFF HIS BACK" DRAWS. PLEASE CONTINUE TO GIVE GENEROUSLY SO THAT WE CAN SUPPORT MIKKO AND OUR TEAM.

SPECIAL SPONSORS TO
MICHAEL KNIGHTS
Keith and Lorna Main (KLM)

SPECIAL SPONSORS TO
MICHAEL KNIGHTS
Gary Cockram

www.icehockeyleague.co.uk

Connells

For all your property needs

Milton Keynes
01908 674141

Stony Stratford
01908 563993

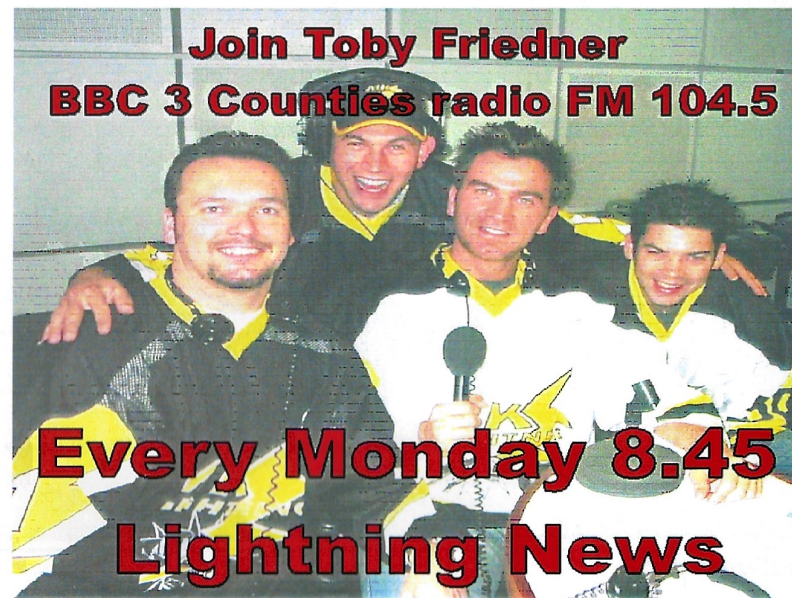
Bletchley
01908 375241

Newport Pagnell
01908 610805

Residential Sales & Lettings • Mortgage Services • Conveyancing • Surveyors • Land & New Homes

www.connells.co.uk

Join Toby Friedner
BBC 3 Counties radio FM 104.5



Every Monday 8.45
Lightning News

www.icehockeyleague.co.uk



Autograph:

www.icehockeyleague.co.uk

Player Profile

Name: Michael Knights

Shirt Number: #4

Position: Defence

DOB: 3rd November 1977

Place of Birth: Durham

Status: engaged to Danielle

Nickname: Knightey

Former clubs: Durham, Kingston, Edinburgh, Milton Keynes, Basingstoke, Coventry

Earliest memory of playing: training with the Durham u14s, with just an old pair of leg pads, elbow pads, helmet and gloves, at 8 years old.

Biggest influence on your career: Glyn Hall (Durham u14s Coach), Parents

Best moment in hockey/sport: ...any win!!

Worst moment in hockey/sport: any injury.

Most admired players in hockey: Kip Noble, Craig Chapman

Three words to describe yourself: Honest, Reliable, Dedicated

Favourite food/drink: Chicken & Pasta, Jack Daniels + Coke

Ideal night in/out: ...out for a meal with Danielle

Superstitions: too many to mention!!

How do you think hockey could be improved in this country?:
more top class coaches at "grass roots" level & less imports

What event in the world would you pay to watch??: World Cup Final

What event would you pay to avoid watching??: Bowling

If you were not playing hockey, what would you be doing?
Physiotherapist / Personal Fitness Instructor

Ambitions: To live a long and healthy life, and to be able to provide everything my family needs.

www.icehockeyleague.co.uk



Sponsor your favourite Lightning Equipment



- Your name alongside your sponsored player on sponsors grid
- To arrange sponsorship contact The Club Stand on match nights

Name		Player Gold	Player Silver	Player Bronze	Shirt	Skates	Stick
		£450	£300	£150	£100	£100	£60
1. Allen Sutton	T						
4. Michael Knights	R			Sylvia West			
5. Leigh Jamieson	A						
7. Phil Wooderson	C						T.O.G's
9. Greg Owen	K						
11. Mark Krater	S						Jo
14. Gary Clarke	U	Russell & Marcia					Belinda Elcox
17. Dean Campbell	I	Mike Piggott	Pat Corrigan				Scott Fair
22. Dwayne Newman	T				Diane, Simon & Harrison		Sarah Hudson
27. Mikko Skinnari	S			Danni Cox			
31. Barry Hollyhead	O						
50. Greg Randall	N	Keith & Lorna KLM					
55. Simon Howard	S						
91. Nick Poole	O			Carolynn Langley			Jane Hudson
18. Kieron Goody	R						
8. Rich Munnelly	E						
16. Mark Conway	H						
	I						
	S						
	L						
	O						
	P						

www.icehockeyleague.co.uk

Helmet	Gloves	Shoulder Pads	Box	Leg Guards	Elbow Pads	Socks	LegTape
£25	£20	£15	£10	£5	£5	£5	£5
Ice Gems					Fancourt & Hamilton		
		B2 Promo Designs	Sonny & Mason	B2 Promo Designs			
Ice Gems			Paul & Jane Connor	Ice Gems			
			Andy & Sian Roles	Cats Protection League 01296 738558			
	Roy & Diana Warlow	B2 Promo Designs		B2 Promo Designs			
		Rob & Helen		Cai Krater			
			Lesley & Michelle	Bob & Deb RCM Partitions			
	Roy & Diana Warlow	Wheelchair Noize	Amy Taylor	Charlotte Hopkins	Thomas Gamba	Ashley Swain	Thomas Gamba
	Paul & Jane Connor		Diane,Simon & Harrison	Emma Lyford Brown	Bowler	Ashley Swain	
	Roy & Diana Warlow			Lime Tree Pantry			
	Roy & Diana Warlow	Geoff Spring		Lime Tree Pantry			
	Kevin Slade	Vicky Chadwick					
		Wheelchair Noize		Allyson ABC Design			
	Paul & Jane Connor	Wheelchair Noize	Tina Marshall	Bob & Deb RCM Partitions			
	Roy & Diana Warlow		Travellers To Nottingham	Pat Corrigan	Luke W		
				Kim Cole	Chloe Hoy		
				Pat Corrigan	I Block Fan Club		

www.icehockeyleague.co.uk

Fixtures & Facts

Date	Opposition	H/A	Competition	Face Off	Result	Man of the Match
August						
Sat 31	Romford Raiders	H	ENPL	19.00	7-7D	N.Poole
September						
Sun 01	Invicta Dynamos	A	ENPL	17.15	5-2W	G.Owen
Sat 07	Chelmsford Chieftains	H	ENPL	19.00	9-8W	D.Newman
Sun 08	Haringey Racers	A	ENPL	17.15	8-4W	G.Clarke
Sat 14	Nottingham Lions	H	ENPL	19.00	6-0W	G.Owen
Sun 15	Peterboro Phantoms	A	ENPL	17.30	4-6L	L.Jamieson
Sat 21	Telford Wild Foxes	H	ENPL	19.00	13-2W	S.Howard
Sun 22	Nottingham Lions	A	ENPL	17.00	6-2W	G.Clarke
Sat 28	Haringey Racers	H	ENPL	19.00	11-1W	M.Skinnari
Sun 29	Romford Raiders	A	ENPL	17.15	4-6L	G.Owen
October						
Sat 05	Invicta Dynamos	H	ENPL	19.00	8-1W	M.Conway
Sun 06	Slough Jets	A	ENPL	18.15	3-4L	G.Clarke
Sat 12	Chelmsford Chieftains	H	ENPL	19.00	8-1W	B.Hollyhead
Sun 13	Telford Wild Foxes	A	ENPL	17.30	5-2W	N.Poole
Thu 17	Coventry Blaze	A	Challenge	20.00	1-6L	G.Randall
Sat 19	IOW Raiders	H	ENPL	19.00	8-4W	M.Skinnari
Sun 20	Romford Raiders	A	ENPL	17.15	1-2L	D.Campbell
Sat 26	Haringey Racers	H	ENPL	19.00	11-1W	D.Newman
Wed 30	Peterborough Phantoms	H	Challenge	19.30	9-7W	P.Wooderson
November						
Sat 02	Slough Jets	A	ENPL	19.00	2-2D	M.Skinnari
Sun 03	Telford Wild Foxes	A	ENPL	17.30	8-1W	P.Wooderson
Sat 09	Nottingham Lions	H	ENPL	19.00	11-0W	M.Conway
Sun 10	IOW Raiders	A	ENPL	18.30	5-5D	L.Jamieson
Sat 16	Romford Raiders	H	ENPL	19.00	7-3W	M.Skinnari
Sun 17	Invicta Dynamos	A	ENPL	17.15	4-4D	M.Knights
Sat 23	Swindon Lynx	H	ENPL	19.00	7-1W	G.Clarke
Sun 24	Haringey Racers	A	ENPL	17.15	9-2W	G.Owen
Sat 30	Slough Jets	H	ENPL	19.00	5-3W	S.Howard
December						
Sun 01	Slough Jets	A	CUP	18.15	5-2W	N.Poole
Sat 07	Swindon Lynx	A	ENPL	17.30	7-3W	G.Owen
Sat 14	IOW Raiders	H	ENPL	19.00	3-2W	B. Hollyhead
Sun 15	Swindon Panthers	H	Challenge	18.00	9-2W	M. Conway
Sat 21	Peterboro Phantoms	H	ENPL	19.00	4-4D	L. Jamieson
Sun 22						
Sat 28	Telford Wild Foxes	H	ENPL	19.00		
Sun 29	Peterboro Phantoms	A	ENPL	17.30		

www.icehockeyleague.co.uk

Date	Opposition	H/A	Competition	Face Off	Result	Man of the Match
January						
Sat 04	IOW Raiders	A	CUP	18.30		
Sun 05	Swindon Lynx	H	ENPL	18.00		
Sat 11	Invicta Dynamos	H	ENPL	19.00		
Sun 12	Chelmsford Chieftains	A	ENPL	18.30		
Sat 18	Invicta Dynamos	H	CUP	19.00		
Sun 19	IOW Raiders	A	ENPL	18:30		
Sat 25	England U20's	H	ENPL	19.00		
Sun 26	Swindon Lynx	A	ENPL	18.00		
Feburary						
Sat 01	Swindon Lynx	A	CUP	18.00		
Sun 02	Slough Jets	H	ENPL	18.00		
Sat 08	Peterboro Phantoms	H	ENPL	19.00		
Sun 09	Invicta Dynamos	A	CUP	17:15		
Sat 15						
Sun 16	Slough Jets	H	CUP	18.00		
Sat 22	Swindon Lynx	H	CUP	19.00		
Sun 23	Nottingham Lions	A	ENPL	18.00		
March						
Sat 01	Romford Raiders	H	CUP	19.00		
Sat 02	Romford Raiders	A	CUP	17.15		
Sat 08	IOW Raiders	H	CUP	19.30		
Sun 09	Chelmsford Chieftains	A	ENPL	17.15		

Lightning Score Shown First

Playoffs to be played between March 15th & April 13th 2003

Key: ENPL - English National Premier League

CUP - English Cup

**** EXTRA GAME ****

Thursday 2nd January

MK LIGHTNING v CANTON UNIVERSITY

Face Off 7.30pm

Hockey is a Dangerous Sport.

**Keep your eyes on the puck
at all times.!!**



www.icehockeyleague.co.uk

OFFICIAL REFEREE'S SIGNALS



BOARDING
Pound closed fist into open palm of other hand. *Forcing a player into the boards.*



DELAYED PENALTY
Extends arm upwards and points to penalized player. *Penalty called after penalized team gains possession of puck.*



HOLDING
Clasp wrist of the whistle hand with the opposite hand. *Holding an opponent with hands or stick.*



CHARGING
Rotating clenched fists around each other. *A player who runs, jumps or charges an opponent.*



ELBOWS
Taps elbow of the whistle hand with other hand. *Using elbows in any way to foul an opponent.*



HOOING
Tugging motion with both hands towards chest. *Impeding an opponents progress by hooking with a stick.*



CROSS-CHECKING
A forward and backward motion with both fists. *Cross-checking on opponent with the shaft of the stick.*



HIGH STICKS
Hold both fists clenched one above the other and above head. *Carrying or using stick above shoulder level.*



SLASHING
Chopping motion with one hand over the other. *Impeding progress of an opponent by slashing with a stick.*



INTERFERENCE
Crossed arms in front of the chest. *Impeding progress of an opponent not in possession of the puck.*



ROUGHING
Extends right arm from side with thrust. *Unnecessary roughness on an opponent.*



TRIPPING
Strike right leg with right hand below the knee. *Tripping an opponent with stick, knee, foot, arm or elbow.*



MISCONDUCT
Both hands on hips. *Continued misconduct after warning.*



SPEARING
Jabbing motion with both hands in front of body. *Spearing an opponent with the stick blade, or attempting to.*



WASH OUT
Both arms swing laterally across body palms down. *Goal disallowed or no offside after delay call.*



TIME-OUT
Use both hands to form a T in front of the chest.



ICING
Linesmans arms folded across the upper chest.



KNEEING
Slapped the knee with palm of hand. *Called when using knee to impede opponent.*

www.icehockeyleague.co.uk

**SPECIAL JOINING FEE
OFFERS AVAILABLE***

**NO ANNUAL
CONTRACT**

Fit health and fitness into your life!



You can discover just what LivingWell has to offer – take a guided tour of our superb facilities which include everything you'd expect from our state-of-the-art gym to an inviting pool. And meet our friendly and helpful team who'll answer any questions you have on the healthy benefits of membership.

You can also enjoy great savings with our special offers!

ZIP ALONG TO LIVINGWELL TODAY

GO • CHILL



YET ANOTHER GREAT
PLACE TO SPEND YOUR
LEISURE TIME:

GO • MK LIGHTNING!

GO • MK

0870 120 1269

WWW.GOMK.NET

MILTON KEYNES